

Product datasheet for **AP08305PU-N**

CDA (N-term) Rabbit Polyclonal Antibody

Product data:

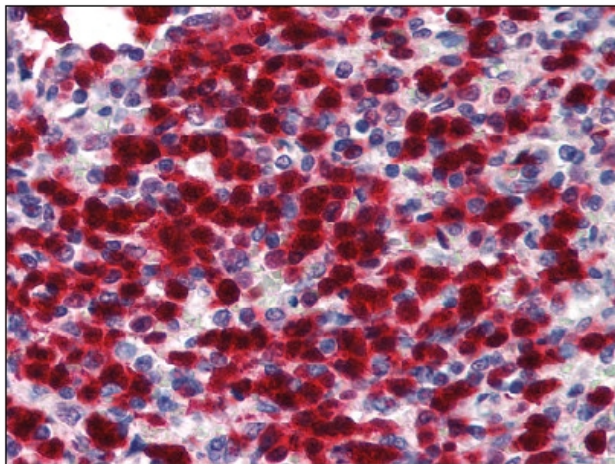
Product Type:	Primary Antibodies
Applications:	ELISA, IHC, WB
Recommended Dilution:	ELISA: 1 µg/ml. Immunohistochemistry on Paraffin Sections: 5 µg/ml. Western Blot: 1 µg/ml.
Reactivity:	Human
Host:	Rabbit
Isotype:	IgG
Clonality:	Polyclonal
Immunogen:	Synthetic peptide corresponding to N-terminal residues of Human Cytidine Deaminase.
Specificity:	This antibody recognizes Cytidine Deaminase/CDA (N-term).
Formulation:	PBS containing 0.01% Sodium Azide as preservative and 50% Glycerol as stabilizer. State: Aff - Purified State: Liquid purified Ig fraction.
Concentration:	lot specific
Purification:	Immunoaffinity Chromatography.
Conjugation:	Unconjugated
Storage:	Store the antibody undiluted at 2-8°C for one month or (in aliquots) at -20°C for longer. Avoid repeated freezing and thawing.
Stability:	Shelf life: one year from despatch.
Gene Name:	cytidine deaminase
Database Link:	Entrez Gene 978 Human P32320
Background:	Cytidine Deaminase (CDA) scavengers exogenous and endogenous cytidine and 2'-deoxycytidine for UMP synthesis. Growth inhibition of granulocyte-macrophage colony forming cells by human cytidine deaminase requires the catalytic function of the protein. It is highly expressed in granulocytes.
Synonyms:	CDA, CDD



[View online »](#)

Note: Predicted Molecular Weight: 16 kDa.

Product images:



Spleen: Formalin-Fixed Paraffin Embedded (FFPE)