

Product datasheet for **AP08281PU-N**

Protein phosphatase inhibitor 1 (PPP1R1A) (50-100) Rabbit Polyclonal Antibody

Product data:

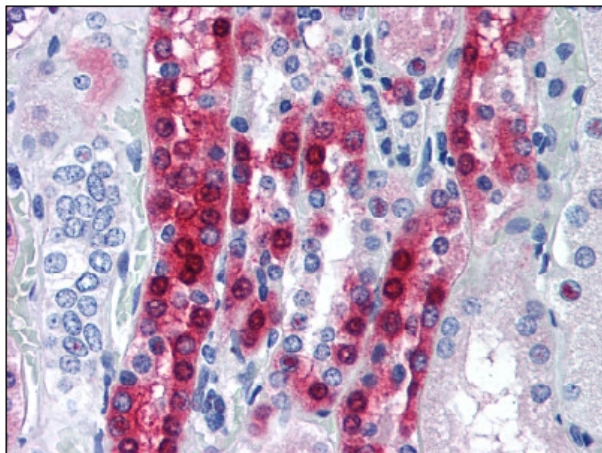
Product Type:	Primary Antibodies
Applications:	IHC, WB
Recommended Dilution:	Immunohistochemistry on Paraffin Sections: 10 µg/ml. Western Blot: 0.5 - 2 µg/ml.
Reactivity:	Bovine, Canine, Equine, Human, Monkey, Mouse, Rat, Xenopus, Chimpanzee
Host:	Rabbit
Isotype:	IgG
Clonality:	Polyclonal
Immunogen:	Synthetic peptide corresponding to a portion of the amino acids 50-100 of Human PPP-1
Specificity:	This antibody recognizes Protein Phosphatase-1 Inhibitor (PPP1R1A) at aa 50-100.
Formulation:	PBS containing 0.05% Sodium Azide as preservative and 0.2% Gelatin as stabilizer State: Aff - Purified State: Liquid purified Ig fraction
Concentration:	lot specific
Purification:	Immunoaffinity Chromatography
Conjugation:	Unconjugated
Storage:	Store the antibody undiluted at 2-8°C for one month or (in aliquots) at -20°C for longer. Avoid repeated freezing and thawing.
Stability:	Shelf life: one year from despatch.
Predicted Protein Size:	19 kDa
Gene Name:	protein phosphatase 1 regulatory inhibitor subunit 1A
Database Link:	Entrez Gene 5502 Human Q13522
Background:	Protein phosphatase inhibitor 1 (IPP1) may be important in hormonal control of glycogen metabolism. Hormones that elevate intracellular cAMP increase IPP1 activity in many tissues. IPP1 activation may impose cAMP control over proteins that are not directly phosphorylated by PKA. Following a rise in intracellular calcium, IPP1 is inactivated by calcineurin (or PP2B). Does not inhibit type-2 phosphatases.



[View online »](#)

Synonyms: IPP1, IPP-1

Product images:



Formalin-Fixed Paraffin-Embedded Human Kidney stained with PPP1R1A Antibody at 10 ug/ml after heat-induced antigen retrieval.