

Product datasheet for **AP08276PU-N**

Eph receptor A2 (EPHA2) (450-500) Rabbit Polyclonal Antibody

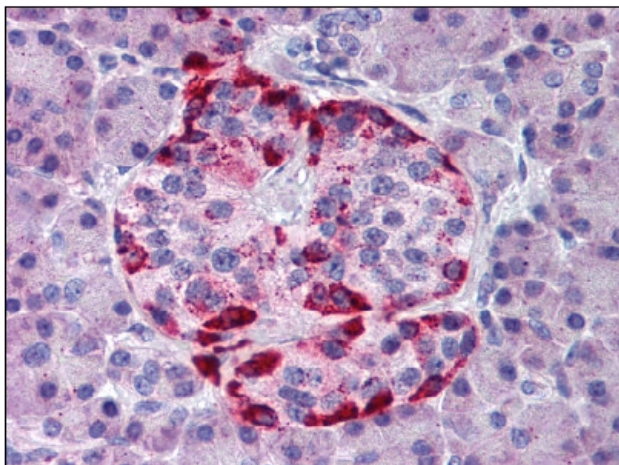
Product data:

Product Type:	Primary Antibodies
Applications:	IHC, WB
Recommended Dilution:	Immunohistochemistry on Paraffin Sections: 10 µg/ml. Western Blot: 0.5 - 2 µg/ml.
Reactivity:	Bovine, Canine, Equine, Human, Monkey, Mouse, Rat, Chimpanzee
Host:	Rabbit
Isotype:	IgG
Clonality:	Polyclonal
Immunogen:	Synthetic peptide corresponding to a portion of the amino acids 450-500 of Human EphA2
Specificity:	This antibody recognizes Ephrin Type A Receptor 2 (EPHA2) at aa 450-500.
Formulation:	PBS containing 0.05% Sodium Azide as preservative and 0.2% Gelatin as stabilizer State: Aff - Purified State: Liquid purified Ig fraction
Concentration:	lot specific
Purification:	Immunoaffinity Chromatography
Conjugation:	Unconjugated
Storage:	Store the antibody undiluted at 2-8°C for one month or (in aliquots) at -20°C for longer. Avoid repeated freezing and thawing.
Stability:	Shelf life: one year from despatch.
Gene Name:	EPH receptor A2
Database Link:	Entrez Gene 1969 Human P29317
Background:	EPH and EPH-related receptors have been implicated in mediating developmental events, particularly in the nervous system. Receptors in the EPH subfamily typically have a single kinase domain and an extracellular region containing a Cys-rich domain and 2 fibronectin type III repeats. The ephrin receptors are divided into 2 groups based on the similarity of their extracellular domain sequences and their affinities for binding ephrin-A and ephrin-B ligands.
Synonyms:	Ephrin type-A receptor 2, Epithelial cell kinase, Eph receptor A2



[View online »](#)

Product images:



Pancreas: Formalin-Fixed Paraffin-Embedded (FFPE) using EPHA2 antibody