

## Product datasheet for **AP08261PU-N**

### **C5L2 (C5AR2) (1-50) Rabbit Polyclonal Antibody**

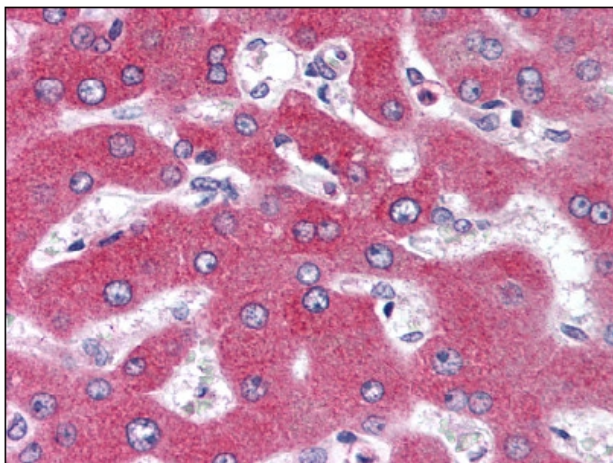
#### **Product data:**

Product Type:	Primary Antibodies
Applications:	IHC, WB
Recommended Dilution:	<b>Immunohistochemistry on Paraffin Sections:</b> 10 µg/ml. <b>Western Blot:</b> 0.5 - 2 µg/ml.
Reactivity:	Bovine, Human, Monkey, Chimpanzee
Host:	Rabbit
Isotype:	IgG
Clonality:	Polyclonal
Immunogen:	Synthetic peptide corresponding to a portion of the amino acids 1-50 of human GPR77
Specificity:	This antibody recognizes G Protein-Coupled Receptor C5L2/GPR77 at aa 1-50.
Formulation:	PBS containing 0.05% Sodium Azide as preservative and 0.2% Gelatin as stabilizer State: Aff - Purified State: Liquid purified Ig fraction
Concentration:	lot specific
Purification:	Immunoaffinity Chromatography
Conjugation:	Unconjugated
Storage:	Store the antibody undiluted at 2-8°C for one month or (in aliquots) at -20°C for longer. Avoid repeated freezing and thawing.
Stability:	Shelf life: one year from despatch.
Gene Name:	complement component 5a receptor 2
Database Link:	<a href="#">Entrez Gene 27202 Human</a> <a href="#">Q9P296</a>
Background:	The receptors for glycoprotein hormones are G protein-coupled, 7-transmembrane receptors (GPCRs) with large N-terminal extracellular domains. GPCR C5L2 is a member of this family (subfamily: anaphylatoxin) and its expression has been reported in liver and in several brain regions, including frontal cortex, hypothalamus, and hippocampus.
Synonyms:	G-protein coupled receptor 77



[View online »](#)

**Product images:**



Liver: Formalin-Fixed Paraffin-Embedded (FFPE)