

## Product datasheet for **AP08258PU-N**

### ZMYM2 (1250-1300) Rabbit Polyclonal Antibody

#### Product data:

|                       |   |
|-----------------------|---|
| Product Type:         | Primary Antibodies  |
| Applications:         | IHC, WB   |
| Recommended Dilution: | <b>Immunohistochemistry on Paraffin Sections:</b> 10 µg/ml.<br><b>Western Blot:</b> 0.1 - 1 µg/ml.  |
| Reactivity:           | Bovine, Canine, Chicken, Human, Monkey, Mouse, Rat, Orang-Utan  |
| Host:                 | Rabbit  |
| Isotype:              | IgG   |
| Clonality:            | Polyclonal  |
| Immunogen:            | Synthetic peptide corresponding to the amino acids 1250-1300 of human Zinc finger protein 198   |
| Specificity:          | This antibody recognizes Zinc Finger Protein 198 (ZNF198) (ZMYM2) at aa 1250-1300.  |
| Formulation:          | PBS containing 0.05% Sodium Azide as preservative and 0.2% Gelatin as stabilizer<br>State: Aff - Purified<br>State: Liquid purified Ig fraction |
| Concentration:        | lot specific  |
| Purification:         | Immunoaffinity Chromatography   |
| Conjugation:          | Unconjugated  |
| Storage:              | Store the antibody undiluted at 2-8°C for one month or (in aliquots) at -20°C for longer.<br>Avoid repeated freezing and thawing.               |
| Stability:            | Shelf life: one year from despatch.   |
| Gene Name:            | zinc finger MYM-type containing 2   |
| Database Link:        | <a href="#">Entrez Gene 7750 Human</a><br><a href="#">Q9UBW7</a>  |



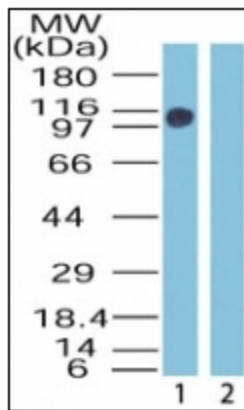
[View online »](#)

**Background:**

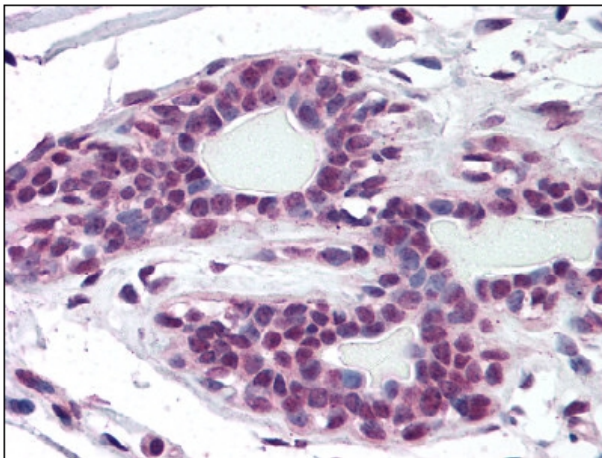
Zfp198 (zinc finger protein 198, also known as ZNF198 or Zinc finger MYM-type protein 2) is a transcription factor that contains 9 MYM-type zinc fingers. Zfp198 interacts with, and is modified by, SUMO1 and colocalises with PML to nuclear bodies. Zfp198 has also been shown to stabilise the LSD1-CoREST-HDAC1 complex on chromatin through its MYM-type zinc fingers. A chromosomal translocation resulting in a Zfp198-FGFR1 fusion is associated with stem cell leukemia lymphoma syndrome (SCLL). SCLL usually presents as a lymphoblastic lymphoma in association with a myeloproliferative disorder.

**Synonyms:**

ZNF198, FIM, RAMP

**Product images:**


Western blot analysis of Zinc Finger Protein 198 in a mouse skeletal muscle lysate in the absence (Lane 1) and presence (Lane 2) of immunizing peptide using antibody at 0.1 ug/ml.



Breast: Formalin-Fixed Paraffin-Embedded (FFPE)