

Product datasheet for **AP08213PU-N**

Thymidylate Synthase (TYMS) Sheep Polyclonal Antibody

Product data:

Product Type:	Primary Antibodies
Applications:	ELISA, IF, IHC, IP, WB
Recommended Dilution:	ELISA. Immunofluorescence. Immunohistochemistry on Paraffin Sections: 5 µg/ml. Immunoprecipitation. Western Blot.
Reactivity:	Human
Host:	Sheep
Isotype:	IgG
Clonality:	Polyclonal
Immunogen:	Recombinant human Thymidylate Synthase (36 kD) produced in E. coli
Specificity:	This antibody recognizes Human Thymidylate Synthetase (TYMS).
Formulation:	0.02 M Potassium Phosphate, 0.15 M Sodium Chloride, pH 7.2, 0.01% Sodium Azide as preservative State: Purified State: Liquid purified Ig fraction
Concentration:	lot specific
Conjugation:	Unconjugated
Storage:	Store undiluted at 2-8°C for one month or (in aliquots) at -20°C for longer. Avoid repeated freezing and thawing.
Stability:	Shelf life: one year from despatch.
Gene Name:	thymidylate synthetase
Database Link:	Entrez Gene 7298 Human P04818



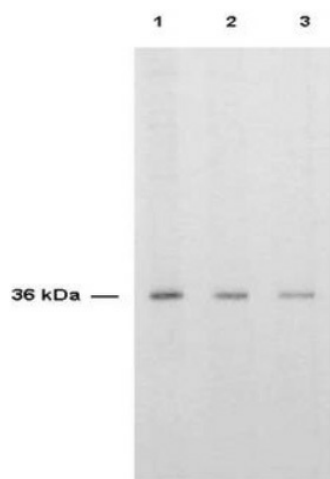
[View online »](#)

Background:

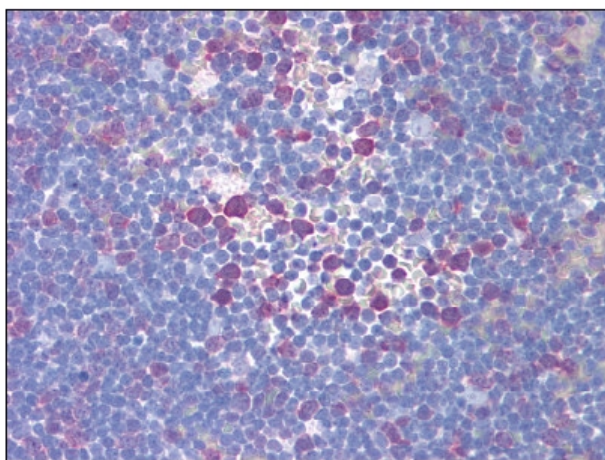
Thymidylate synthase (TS) is an intracellular enzyme critical for de novo synthesis of DNA. In cancer, expression of TS is often elevated and becomes further elevated as a result of treatment with the most commonly used chemotherapeutic, 5-fluorouracil (5-FU). Resistance or lack of response to 5-FU is attributed to the elevation of TS activity. Overexpression of TS has been demonstrated in many types of tumors including breast, colon, gastric and melanoma and is usually predictive of shortened survival time.

Synonyms:

TYMS, TSase, OK/SW-cl.29

Product images:

Western Blot using Thymidylate Synthase Antibody: Anti-TS is shown to detect thymidylate synthase present in a HeLa cell extract. Each lane is estimated to contain 4 ug of protein. Lanes 1, 2 and 3 represent 1:2000, 1:5000 and 1:10000 fold dilutions of the antibody. Detection was made using HRP Rabbit-anti-Sheep IgG diluted 1:1000 and color development using TMB (TMBM-100) substrate for approximately 4.



Formalin-Fixed Paraffin-Embedded Human Thymus stained with using Thymidylate Synthase Antibody