

Product datasheet for **AP08211PU-N**

alpha 1 Antitrypsin (SERPINA1) Goat Polyclonal Antibody

Product data:

Product Type:	Primary Antibodies
Applications:	ELISA, IF, IHC, IP, WB
Recommended Dilution:	ELISA. Immunofluorescence. Immunohistochemistry on Paraffin Sections: 5 µg/ml. Immunoprecipitation. Western Blot.
Reactivity:	Human
Host:	Goat
Isotype:	IgG
Clonality:	Polyclonal
Immunogen:	Synthetic peptide corresponding to Alpha-1-Anti-Trypsin [Human Plasma].
Specificity:	This antibody is specific to Alpha-1-antitrypsin (SERPINA1).
Formulation:	0.02M Potassium Phosphate, 0.15M Sodium Chloride, pH 7.2, 0.01% Sodium Azide as preservative. State: Ig Fraction State: Liquid purified Ig fraction.
Concentration:	lot specific
Purification:	IgG Fractionation.
Conjugation:	Unconjugated
Storage:	Store the antibody undiluted at 2-8°C for one month or (in aliquots) at -20°C for longer. Avoid repeated freezing and thawing.
Stability:	Shelf life: one year from despatch.
Gene Name:	serpin family A member 1
Database Link:	Entrez Gene 5265 Human P01009

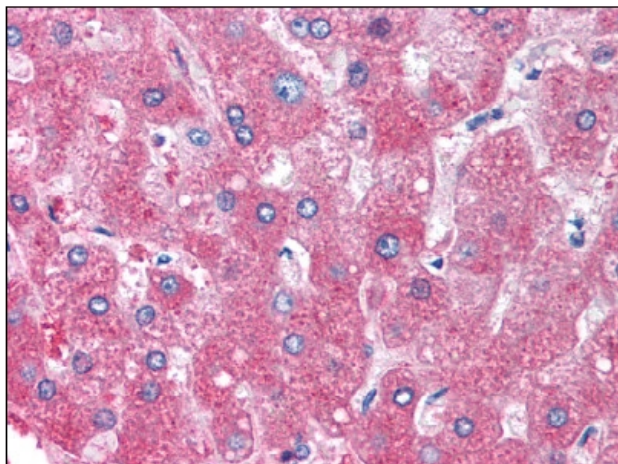


[View online »](#)

Background: Alpha 1 Antitrypsin is a plasma protein synthesised in the liver. It consists of a single polypeptide chain and has a molecular weight of 52 kDa. A serine protease inhibitor, its primary function is the protection of lung tissue from the action of neutrophil elastase. The average level of alpha 1 Antitrypsin in plasma is 1.3 g/l.

Synonyms: SERPINA1, AAT

Product images:



Liver: Formalin-Fixed Paraffin-Embedded (FFPE)