

## Product datasheet for **AP08210PU-N**

### **PKM2 (PKM) (Isoforms M1 + M2) Goat Polyclonal Antibody**

#### **Product data:**

Product Type:	Primary Antibodies
Applications:	ELISA, IHC, IP, WB
Recommended Dilution:	<b>ELISA:</b> 1/4000 - 1/20000. <b>Immunohistochemistry on Paraffin Sections:</b> 5 µg/ml. <b>Immunoprecipitation.</b> <b>Western Blot:</b> 1/500 - 1/2000.
Reactivity:	Human, Rabbit
Host:	Goat
Isotype:	IgG
Clonality:	Polyclonal
Immunogen:	Pyruvate kinase purified from Rabbit muscle.
Specificity:	This antibody recognizes M1 and M2 Isoforms of Pyruvate Kinase (Rabbit Muscle).
Formulation:	0.02 M Potassium Phosphate, 0.15 M Sodium Chloride, pH 7.2, 0.01% Sodium Azide as preservative. State: Ig Fraction State: Liquid purified Ig fraction.
Concentration:	lot specific
Purification:	IgG Fractionation.
Conjugation:	Unconjugated
Storage:	Store the antibody undiluted at 2-8°C for one month or (in aliquots) at -20°C for longer. Avoid repeated freezing and thawing.
Stability:	Shelf life: one year from despatch.
Gene Name:	pyruvate kinase, muscle
Database Link:	<a href="#">Entrez Gene 5315 Human P14618</a>

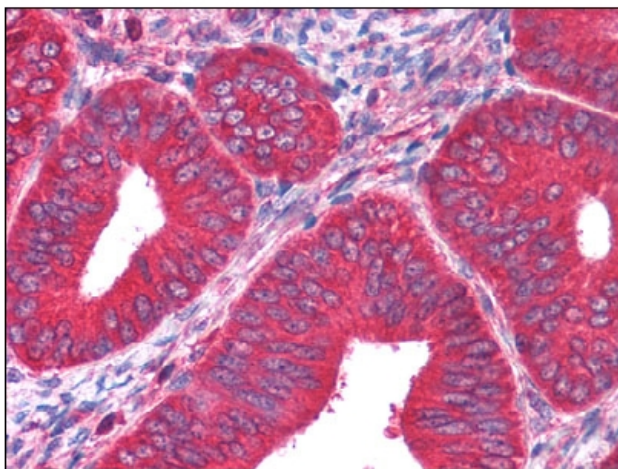


[View online »](#)

**Background:** PKM2 (pyruvate kinase, muscle) catalyzes the production of phosphoenolpyruvate from pyruvate and ATP. PKM2 has been shown to interact with thyroid hormone, and thus may mediate cellular metabolic effects induced by thyroid hormones. It has been found to bind Opa protein, a bacterial outer membrane protein involved in gonococcal adherence to and invasion of human cells, suggesting a role of this protein in bacterial pathogenesis. Three alternatively spliced transcript variants encoding two distinct isoforms have been reported.

**Synonyms:** PK2, PK3, PKM, CTHBP, M2-PK, THBP1, OIP3, OIP-3, Pyruvate kinase 2/3, Pyruvate kinase M1/M2, Pyruvate kinase muscle

**Product images:**



Uterus: Formalin-Fixed Paraffin-Embedded (FFPE)