

Product datasheet for **AP08209PU-N**

MDH1 Sheep Polyclonal Antibody

Product data:

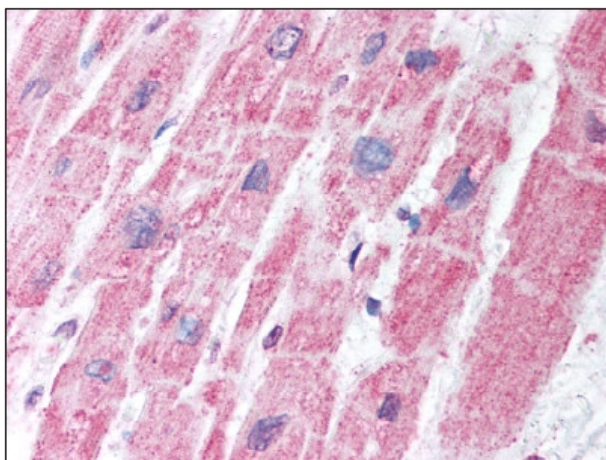
Product Type:	Primary Antibodies
Applications:	ELISA, IHC, IP, WB
Recommended Dilution:	ELISA. Immunohistochemistry on Paraffin Sections: 5 µg/ml. Immunoprecipitation. Western Blot.
Reactivity:	Human, Porcine
Host:	Sheep
Isotype:	IgG
Clonality:	Polyclonal
Immunogen:	Purified Malate Dehydrogenase from pig heart
Specificity:	This antibody is specific to Malate Dehydrogenase (MDH1).
Formulation:	0.02 M Potassium Phosphate, 0.15 M Sodium Chloride, pH 7.2, 0.01% Sodium Azide as preservative State: Ig Fraction State: Liquid purified Ig fraction
Concentration:	lot specific
Conjugation:	Unconjugated
Storage:	Store the antibody undiluted at 2-8°C for one month or (in aliquots) at -20°C for longer. Avoid repeated freezing and thawing.
Stability:	Shelf life: one year from despatch.
Gene Name:	malate dehydrogenase 1
Database Link:	Entrez Gene 4190 Human P40925
Background:	Malate dehydrogenase catalyzes the reversible oxidation of malate to oxaloacetate, utilizing the NAD/NADH cofactor system in the citric acid cycle. Malate dehydrogenase 1 (MDH1) is localized to the cytoplasm and may play pivotal roles in the malate-aspartate shuttle that operates in the metabolic coordination between cytosol and mitochondria.



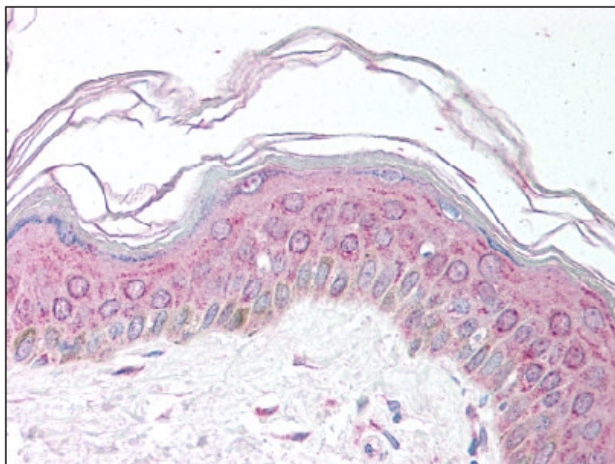
[View online »](#)

Synonyms: MDHA, Malate dehydrogenase, cytoplasmic

Product images:



Heart: Formalin-Fixed Paraffin-Embedded (FFPE)



Skin: Formalin-Fixed Paraffin-Embedded (FFPE)