

Product datasheet for **AP08172BT-N**

CNTF Rabbit Polyclonal Antibody

Product data:

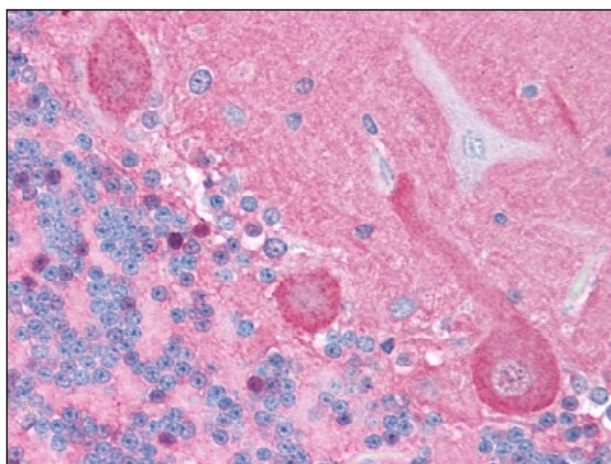
Product Type:	Primary Antibodies
Applications:	ELISA, IHC
Recommended Dilution:	ELISA. Immunohistochemistry on Paraffin Sections: 5 µg/ml.
Reactivity:	Human
Host:	Rabbit
Isotype:	IgG
Clonality:	Polyclonal
Specificity:	This antibody is specific to Ciliary Neurotrophic Factor (CNTF).
Formulation:	PBS, pH 7.4 containing 0.08% Sodium Azide as preservative. Label: Biotin State: Liquid purified Ig fraction.
Concentration:	lot specific
Purification:	Affinity Chromatography on Protein A.
Conjugation:	Biotin
Storage:	Store the antibody undiluted at 2-8°C for one month or (in aliquots) at -20°C for longer. Avoid repeated freezing and thawing.
Stability:	Shelf life: one year from despatch.
Gene Name:	ciliary neurotrophic factor
Database Link:	Entrez Gene 1270 Human P26441
Background:	Ciliary neurotrophic factor (CNTF) is expressed in glial cells within the central and peripheral nervous systems. CNTF stimulates gene expression, cell survival or differentiation in a variety of neuronal cell types such as sensory, sympathetic, ciliary and motor neurons. CNTF itself lacks a classical signal peptide sequence of a secreted protein, but is thought to convey its cytoprotective effects after release from adult glial cells by some mechanism induced by injury. In addition to its neuronal actions, CNTF also acts on non neuronal cells such as glia, hepatocytes, skeletal muscle, embryonic stem cells and bone marrow stromal cells.



[View online »](#)

Synonyms: Ciliary Neurotrophic Factor

Product images:



Brain, cerebellum: Formalin-Fixed Paraffin-Embedded (FFPE)