

Product datasheet for **AP08109PU-S**

HA Epitope Tag (YPYDVPDYA) Rabbit Polyclonal Antibody

Product data:

Product Type:	Primary Antibodies
Applications:	WB
Recommended Dilution:	Western Blot (1/500-1/1000).
Host:	Rabbit
Clonality:	Polyclonal
Immunogen:	The antiserum was produced by immunizing rabbit with synthesized peptide containing the Influenza hemagglutinin epitope (Y-P-Y-D-V-P-D-Y-A).
Specificity:	This polyclonal antibody detects HA-tagged proteins overexpressed in cells. It recognizes the HA-tag fused to either the amino- or carboxy-terminus of targeted proteins in transfected cells.
Formulation:	PBS (without Mg ²⁺ and Ca ²⁺), pH 7.4, 150 mM NaCl and 50% Glycerol State: Aff - Purified State: Liquid purified Ig fraction. Preservative: 0.02% Sodium Azide
Concentration:	lot specific
Purification:	Immunoaffinity Chromatography using epitope-specific peptide.
Conjugation:	Unconjugated
Storage:	Store undiluted at 2-8°C for one month or (in aliquots) at -20°C for longer. Avoid repeated freezing and thawing.
Stability:	Shelf life: one year from despatch.
Background:	Human influenza hemagglutinin (HA) is a surface glycoprotein required for the infectivity of the human virus. The HA tag is derived from the HA molecule corresponding to amino acids 98-106 has been extensively used as a general epitope tag in expression vectors. Many recombinant proteins have been engineered to express the HA tag, which does not appear to interfere with the bioactivity or the biodistribution of the recombinant protein. This tag facilitates the detection, isolation, and purification of the proteins.
Synonyms:	Hemagglutinine Tag



[View online »](#)

Product images:

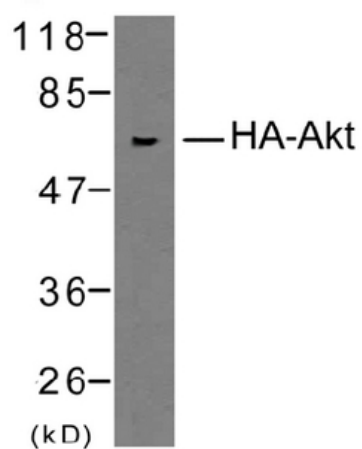


Figure 1. Western blot analysis of extracts from 293 cells transfected with HA-tagged Akt using HA-Tag Polyclonal Antibody AP08109PU.