

Product datasheet for **AP08103PU-N**

SYK Rabbit Polyclonal Antibody

Product data:

Product Type:	Primary Antibodies
Applications:	IF, IHC, WB
Recommended Dilution:	Western Blot: 1/500~1/1000. Immunofluorescence: 1/100~1/200. Immunohistochemistry on Paraffin Sections: 1/50~1/100.
Reactivity:	Human
Host:	Rabbit
Clonality:	Polyclonal
Immunogen:	Peptide sequence around amino acids 321~325 (N-P-Y-E-P) derived from Human Syk.
Specificity:	This antibody detects endogenous levels of total Syk protein.
Formulation:	PBS (without Mg ²⁺ and Ca ²⁺), pH 7.4, 150 mM NaCl, 0.02% Sodium Azide and 50% Glycerol. State: Aff - Purified State: Liquid purified Ig fraction.
Concentration:	lot specific
Purification:	Immunoaffinity Chromatography using epitope-specific immunogen.
Conjugation:	Unconjugated
Storage:	Store the antibody (in aliquots) at -20°C. Avoid repeated freezing and thawing.
Stability:	Shelf life: One year from despatch.
Gene Name:	spleen tyrosine kinase
Database Link:	Entrez Gene 6850 Human P43405



[View online »](#)

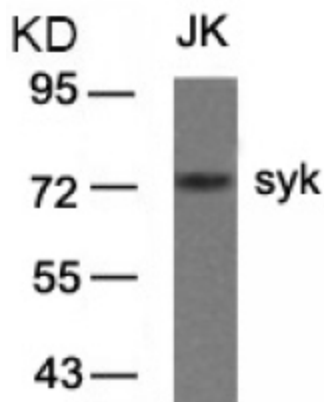
Background:

Syk (72 kDa) is a non receptor protein tyrosine kinase that plays an important role in immune receptor signal transduction and is implicated in endothelial cell functions, including cell growth and migration.

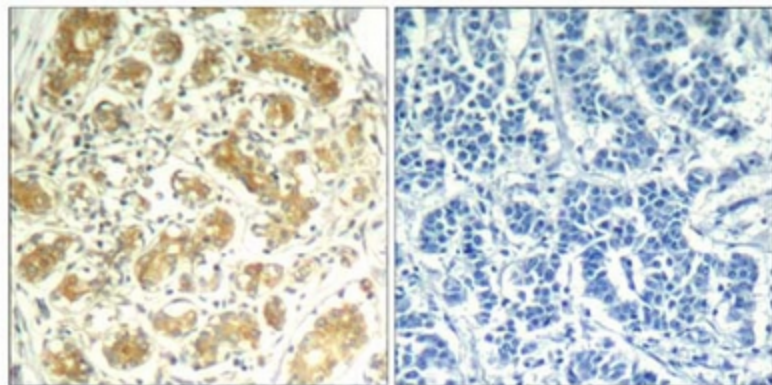
SYK is a positive effector of BCR stimulated responses. It couples the B cell antigen receptor (BCR) to the mobilization of calcium ions either through a phosphoinositide 3 kinase dependent pathway, when not phosphorylated on tyrosines of the linker region, or through a phospholipase C gamma dependent pathway, when phosphorylated on Tyr 342 and Tyr 346. Thus the differential phosphorylation of SYK can determine the pathway by which BCR is coupled to the regulation of intracellular calcium ions.

Synonyms:

Tyrosine-protein kinase SYK, Spleen tyrosine kinase

Product images:

Western blot analysis of extracts from JK using Syk Antibody.

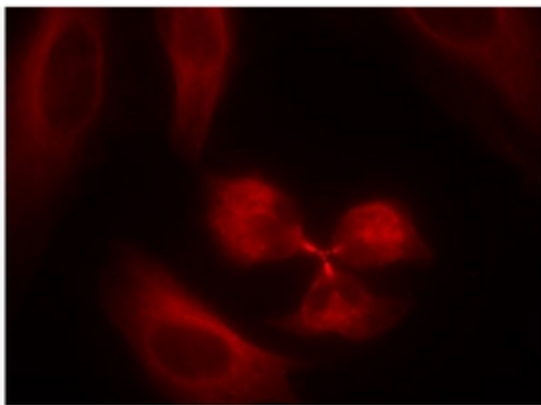


Immunohistochemical analysis of paraffin-embedded human breast carcinoma tissue using Syk Antibody.

Peptide

-

+



Immunofluorescence staining of methanol-fixed HeLa cells using Syk antibody (Red).