

Product datasheet for **AP08100PU-S**

STAT2 Rabbit Polyclonal Antibody

Product data:

Product Type:	Primary Antibodies
Applications:	IHC, WB
Recommended Dilution:	Western Blot (1/500-1/1000). Immunohistochemistry (1/50-1/100).
Reactivity:	Human
Host:	Rabbit
Clonality:	Polyclonal
Immunogen:	The antiserum was produced against synthesized non-phosphopeptide derived from human STAT2 around the phosphorylation site of Tyrosine 690 (R-K-YP-L-K).
Specificity:	This antibody detects endogenous levels of total STAT2 protein.
Formulation:	PBS (without Mg ²⁺ and Ca ²⁺), pH 7.4, 150 mM NaCl, 0.02% Sodium Azide and 50% Glycerol. State: Aff - Purified State: Liquid purified Ig fraction.
Concentration:	lot specific
Purification:	Immunoaffinity Chromatography.
Conjugation:	Unconjugated
Storage:	Store the antibody (in aliquots) at -20°C. Avoid repeated freezing and thawing.
Stability:	Shelf life: One year from despatch.
Gene Name:	signal transducer and activator of transcription 2
Database Link:	Entrez Gene 6773 Human P52630
Synonyms:	p113



[View online »](#)

Product images:

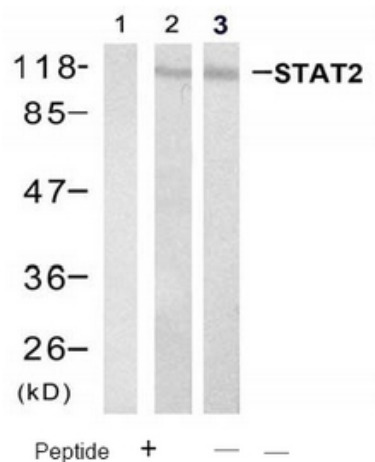
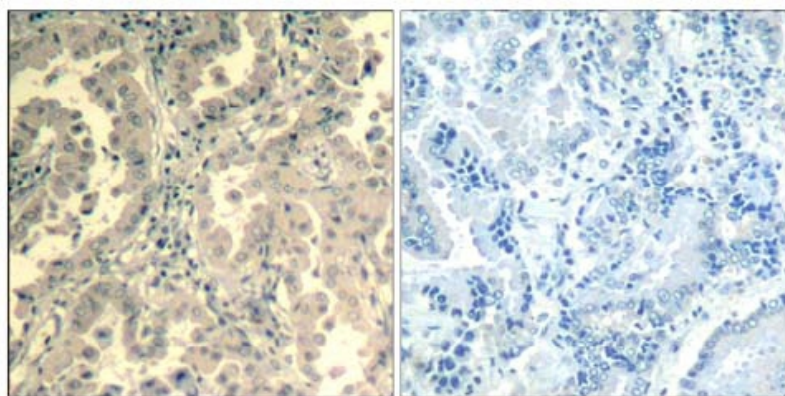


Figure 2. Western blot analysis of extracts from HeLa cell and HL60 cell using STAT2 Antibody AP08100PU (Lane 1, 2 and 3).



Peptide - +

Figure 1. Immunohistochemical analysis of paraffin-embedded human lung carcinoma tissue using STAT2 Antibody AP08100PU.