

Product datasheet for **AP08099PU-S**

c Abl (ABL1) Rabbit Polyclonal Antibody

Product data:

| | |
|------------------------------|---|
| Product Type: | Primary Antibodies |
| Applications: | IHC |
| Recommended Dilution: | Immunohistochemistry (1/50-1/100). |
| Reactivity: | Human, Mouse |
| Host: | Rabbit |
| Clonality: | Polyclonal |
| Immunogen: | The antiserum was produced against synthesized non-phosphopeptide derived from human ABL1/2 around the phosphorylation site of Tyrosine 393/429 (D-T-YP-T-A). |
| Specificity: | This antibody detects endogenous levels of total ABL1/2 protein. |
| Formulation: | PBS (without Mg ²⁺ and Ca ²⁺), pH 7.4, 150 mM NaCl, 0.02% Sodium Azide and 50% Glycerol. State: Aff - Purified State: Liquid purified Ig fraction. |
| Concentration: | lot specific |
| Purification: | Immunoaffinity Chromatography. |
| Conjugation: | Unconjugated |
| Storage: | Store the antibody (in aliquots) at -20°C. Avoid repeated freezing and thawing. |
| Stability: | Shelf life: One year from despatch. |
| Gene Name: | ABL proto-oncogene 1, non-receptor tyrosine kinase |
| Database Link: | Entrez Gene 25 Human P00519 |



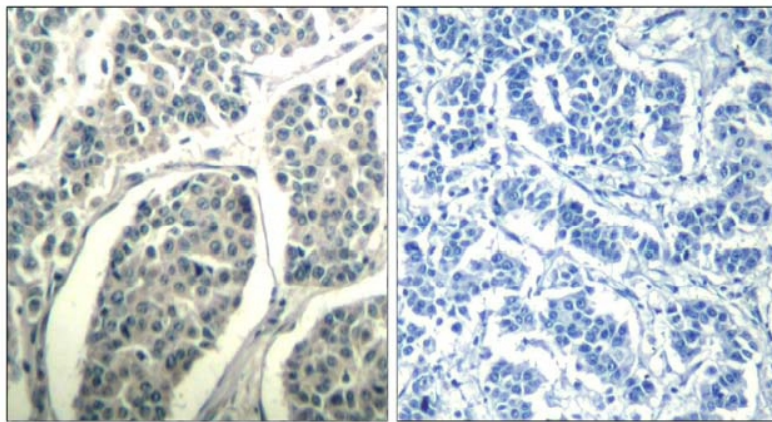
[View online »](#)

Background:

ABL1, an Abl type protein kinase, is associated with cell differentiation, cell division, cell adhesion and stress response. Kinase activity of nuclear ABL1 is mediated by retinoblastoma protein. Additionally, ABL1 has been shown to bind nuclear DNA, and this binding activity is regulated by CDC2-mediated phosphorylation. ABL1 (-/-) mice are osteoporotic and display increased perinatal mortality, reduced fertility, foreshortened crania and defects in the maturation of B cells in bone marrow. At least two mRNA isoforms have been reported, 6- or 7-kb, with alternatively spliced first exons joined to the common exons 2-11. Alterations of ABL1 by chromosomal rearrangement or viral transduction lead to malignant transformation. Further, a very long intron in the ABL1 gene is a target for translocations. Translocations of ABL1 to the breakpoint cluster region (BCR) on chromosome 22 lead to chronic myeloid leukemia and acute lymphocytic leukemia.

Synonyms:

c-ABL, p150, ABL1, ABL2, JTK7, bcr/abl

Product images:

Peptide

-

+

Figure 1. Immunohistochemical analysis of paraffin-embedded human breast carcinoma tissue using ABL1/2 Antibody AP08099PU.