

Product datasheet for **AP08096PU-S**

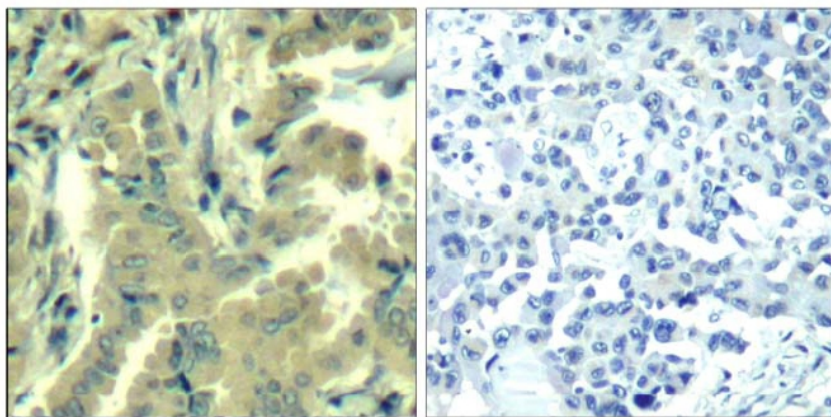
PLCG 2 (PLCG2) Rabbit Polyclonal Antibody

Product data:

Product Type:	Primary Antibodies
Applications:	IF, IHC
Recommended Dilution:	Immunohistochemistry on paraffin sections: 1/50 - 1/100. Immunofluorescence: 1/100 - 1/200.
Reactivity:	Human, Mouse, Rat
Host:	Rabbit
Clonality:	Polyclonal
Immunogen:	The antiserum was produced against synthesized non-phosphopeptide derived from human PLC-gamma 2 around the phosphorylation site of Tyrosine 1217 (F-L-YP-D-T).
Specificity:	This antibody detects endogenous levels of total PLC-gamma 2 protein.
Formulation:	PBS (without Mg ²⁺ and Ca ²⁺), pH 7.4, 150 mM NaCl, 0.02% Sodium Azide and 50% Glycerol. State: Aff - Purified State: Liquid purified Ig fraction
Concentration:	lot specific
Purification:	Immunoaffinity Chromatography
Conjugation:	Unconjugated
Storage:	Store the antibody (in aliquots) at -20°C. Avoid repeated freezing and thawing.
Stability:	Shelf life: One year from despatch.
Gene Name:	phospholipase C gamma 2
Database Link:	Entrez Gene 5336 Human P16885
Synonyms:	Phospholipase C-gamma-2, PLC-gamma-2, Phospholipase C-IV, PLC-IV



[View online »](#)

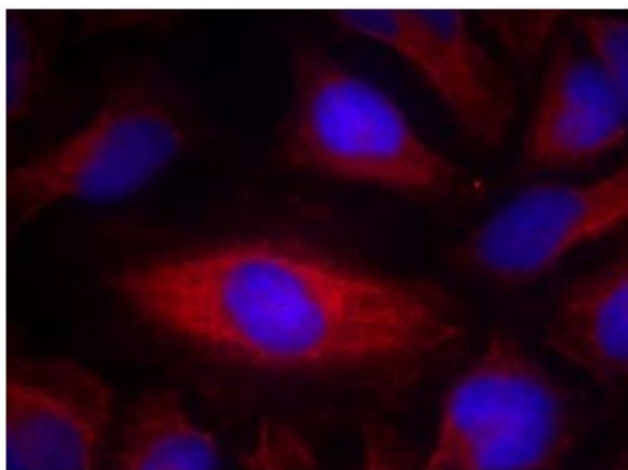
Product images:

Peptide

-

+

Immunohistochemical analysis of paraffin-embedded human lung carcinoma tissue using PLC-gamma 2 Antibody.



Immunofluorescence staining of methanol-fixed HeLa cells using PLC-gamma2 antibody