

## Product datasheet for **AP08094PU-S**

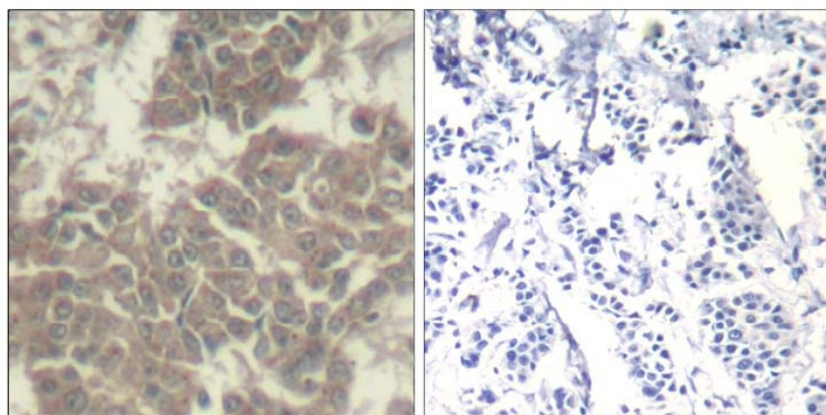
### JAK2 Rabbit Polyclonal Antibody

#### Product data:

Product Type:	Primary Antibodies
Applications:	IHC
Recommended Dilution:	Immunohistochemistry (1/50-1/100).
Reactivity:	Human, Rat
Host:	Rabbit
Clonality:	Polyclonal
Immunogen:	The antiserum was produced against synthesized non-phosphopeptide derived from human Jak2 around the phosphorylation site of Tyrosine 570 (G-D-YP-G-Q).
Specificity:	This antibody detects endogenous levels of total JAK2 protein.
Formulation:	PBS (without Mg <sup>2+</sup> and Ca <sup>2+</sup> ), pH 7.4, 150 mM NaCl, 0.02% Sodium Azide and 50% Glycerol. State: Aff - Purified State: Liquid purified Ig fraction.
Concentration:	lot specific
Purification:	Immunoaffinity Chromatography.
Conjugation:	Unconjugated
Storage:	Store the antibody (in aliquots) at -20°C. Avoid repeated freezing and thawing.
Stability:	Shelf life: One year from despatch.
Gene Name:	Janus kinase 2
Database Link:	<a href="#">Entrez Gene 3717 Human O60674</a>
Synonyms:	Janus kinase 2, JAK-2



[View online »](#)

**Product images:**

Peptide

-

+

Figure 1. Immunohistochemical analysis of paraffin-embedded human breast carcinoma tissue using JAK2 Antibody AP08094PU.