

## Product datasheet for **AP08091PU-S**

### Stathmin 1 (STMN1) Rabbit Polyclonal Antibody

#### Product data:

Product Type:	Primary Antibodies
Applications:	IHC, WB
Recommended Dilution:	Western Blot: 1/500~1/1000. Immunohistochemistry on Paraffin-Embedded Sections: 1/50~1/100.
Reactivity:	Human, Mouse, Rat
Host:	Rabbit
Clonality:	Polyclonal
Immunogen:	The antiserum was produced against synthesized non-phosphopeptide derived from human Stathmin-1 around the phosphorylation site of Serine 62 (R-K- <i>Sp</i> -H-E).
Specificity:	This antibody detects endogenous levels of total Stathmin-1 protein.
Formulation:	PBS (without Mg <sup>2+</sup> and Ca <sup>2+</sup> ), pH 7.4, 150 mM NaCl, 0.02% Sodium Azide and 50% Glycerol. State: Aff - Purified State: Liquid purified Ig fraction.
Concentration:	lot specific
Purification:	Immunoaffinity Chromatography using epitope-specific immunogen.
Conjugation:	Unconjugated
Storage:	Store the antibody (in aliquots) at -20°C. Avoid repeated freezing and thawing.
Stability:	Shelf life: One year from despatch.
Gene Name:	stathmin 1
Database Link:	<a href="#">Entrez Gene 3925 Human P16949</a>
Background:	This protein is a ubiquitous cytosolic phosphoprotein proposed to function as an intracellular relay integrating regulatory signals of the cellular environment. The encoded protein is involved in the regulation of the microtubule filament system by destabilizing microtubules. It prevents assembly and promotes disassembly of microtubules. Alternatively spliced transcript variants encoding the same protein have been identified.



[View online »](#)

**Synonyms:** LAP18, OP18, Phosphoprotein p19, pp19, Leukemia-associated phosphoprotein p18, Oncoprotein 18, Op18, pp17, Prosofin, Metablastin, Protein Pr22

**Product images:**

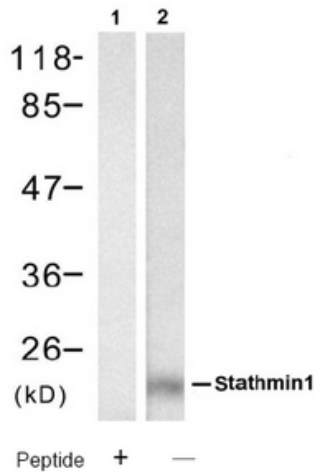


Figure 2. Western blot analysis of extracts from Hela cell using Stathmin-1 antibody (Lane 1 and 2).

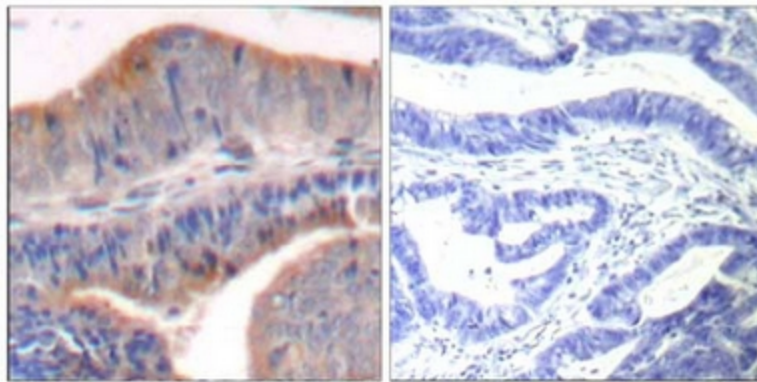


Figure 1. Immunohistochemical analysis of paraffin-embedded human colon carcinoma tissue using Stathmin-1 antibody.

Peptide - +