

Product datasheet for **AP08089PU-N**

EIF4G1 Rabbit Polyclonal Antibody

Product data:

Product Type:	Primary Antibodies
Applications:	IF, IHC, WB
Recommended Dilution:	Western Blot: 1/500 - 1/1000. Immunohistochemistry on paraffin sections: 1/50 - 1/100. Immunofluorescence: 1/100 - 1/200.
Reactivity:	Human
Host:	Rabbit
Clonality:	Polyclonal
Immunogen:	The antiserum was produced against synthesized non-phosphopeptide derived from human eIF4G around the phosphorylation site of Serine 1232 (P-V-Sp-P-L).
Specificity:	This antibody detects endogenous levels of total eIF4G protein.
Formulation:	PBS (without Mg ²⁺ and Ca ²⁺), pH 7.4, 150 mM NaCl, 0.02% Sodium Azide and 50% Glycerol. State: Aff - Purified State: Liquid purified Ig fraction.
Concentration:	lot specific
Purification:	Immunoaffinity Chromatography.
Conjugation:	Unconjugated
Storage:	Store the antibody (in aliquots) at -20°C. Avoid repeated freezing and thawing.
Stability:	Shelf life: One year from despatch.
Gene Name:	eukaryotic translation initiation factor 4 gamma 1
Database Link:	Entrez Gene 1981 Human Q04637



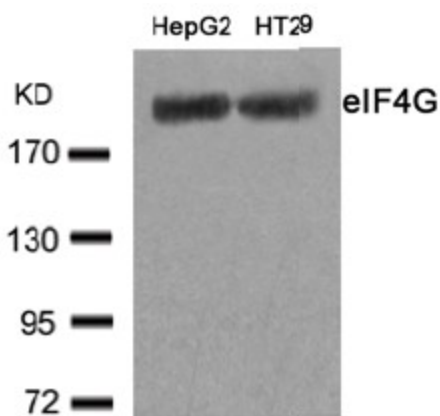
[View online »](#)

Background:

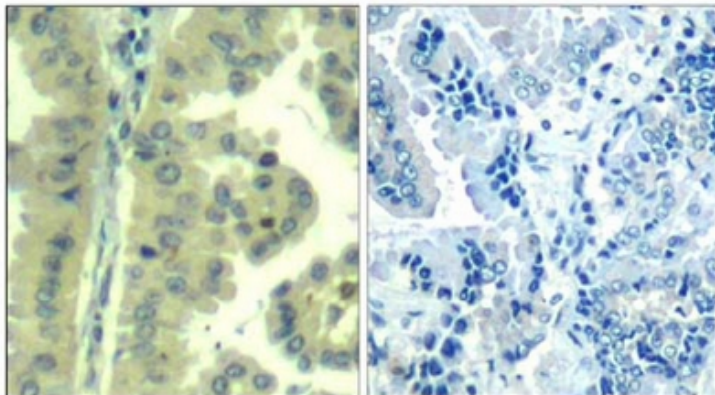
eIF4G1 (eukaryotic translation Initiation Factor 4 Gamma 1) is a component of the protein complex eIF-4 which is involved in the recognition of the mRNA cap ATP-dependent unwinding of the 5'-terminal secondary structure and recruitment of mRNA to the ribosome. eIF4G plays a critical role in protein expression and is at the center of a complex regulatory network. Together with the cap-binding protein eIF4E, it recruits the small ribosomal subunit to the 5'-end of mRNA and promotes the assembly of a functional translation initiation complex which scans along the mRNA to the translation start codon. Human eIF4G contains three consecutive HEAT domains, as well as long unstructured regions involved in multiple protein-protein interactions. The interactions of eIF4G1 with other factors are largely unknown.

Synonyms:

EIF4G, EIF4GI, eIF-4-gamma 1, eIF-4G 1, eIF-4G1, Eukaryotic translation initiation factor 4 gamma 1, p220

Product images:


Western blot analysis of extracts from HepG2 and HT29 cells using eIF4G antibody

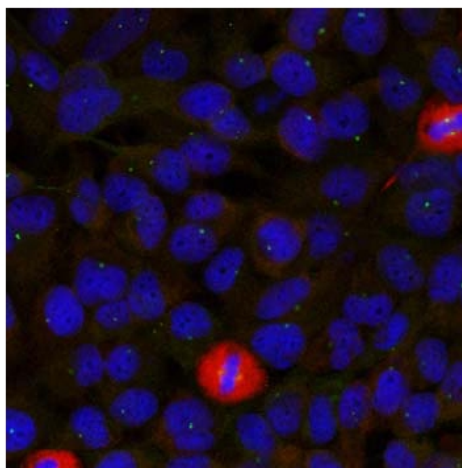


Peptide

-

+

Immunohistochemical analysis of paraffin-embedded human lung carcinoma tissue using eIF4G Antibody.



Immunofluorescence staining of methanol-fixed HeLa cells using eIF4G Antibody (Red).