

## Product datasheet for **AP08087PU-N**

### ErbB 3 (ERBB3) Rabbit Polyclonal Antibody

#### Product data:

Product Type:	Primary Antibodies
Applications:	IF, IHC, WB
Recommended Dilution:	<b>Western blot:</b> 1/500-1/1000. Incubate membrane with diluted antibody in 5% nonfat milk, 1xTBS, 0.1% Tween-20 at 4°C with gentle shaking overnight. <b>Immunofluorescence:</b> 1/100-1/200. Immunohistochemistry on Paraffin-Embedded Sections: 1/50-1/100.
Reactivity:	Human, Mouse, Rat
Host:	Rabbit
Clonality:	Polyclonal
Immunogen:	Peptide sequence around amino acids 1326~1330 (P-D-Y-W-H) derived from Human Her3/ErbB3.
Specificity:	This antibody detects endogenous levels of total Her3/ErbB3 protein.
Formulation:	PBS (without Mg <sup>2+</sup> and Ca <sup>2+</sup> ), pH 7.4, 150 mM NaCl, 0.02% Sodium Azide and 50% Glycerol. State: Aff - Purified State: Liquid purified Ig fraction.
Concentration:	lot specific
Purification:	Immunoaffinity Chromatography using epitope-specific immunogen.
Conjugation:	Unconjugated
Storage:	Store the antibody (in aliquots) at -20°C. Avoid repeated freezing and thawing.
Stability:	Shelf life: One year from despatch.
Gene Name:	erb-b2 receptor tyrosine kinase 3
Database Link:	<a href="#">Entrez Gene 2065 Human P21860</a>



[View online »](#)

**Background:**

The ErbB3 gene encodes a member of the epidermal growth factor receptor (EGFR) family of receptor tyrosine kinases. ErbB3 is a membrane-bound protein which has a neuregulin binding domain but not an active kinase domain. It can therefore bind this ligand but cannot convey a signal into the cell via protein phosphorylation. However it does form heterodimers with other EGF receptor family members which do have kinase activity. Heterodimerization leads to the activation of pathways which lead to cell proliferation or differentiation. Amplification of this gene and/or overexpression of its protein have been reported in numerous cancers including prostate, bladder and breast tumors. Alternate transcriptional splice variants encoding different isoforms have been characterized. One isoform lacks the intermembrane region and is secreted outside the cell. This form acts to modulate the activity of the membrane-bound form. Additional splice variants have also been reported but they have not been thoroughly characterized.

**Synonyms:**

ERBB-3, c-erbB-3, HER-3

**Note:**

Molecular Weight: 185 kDa

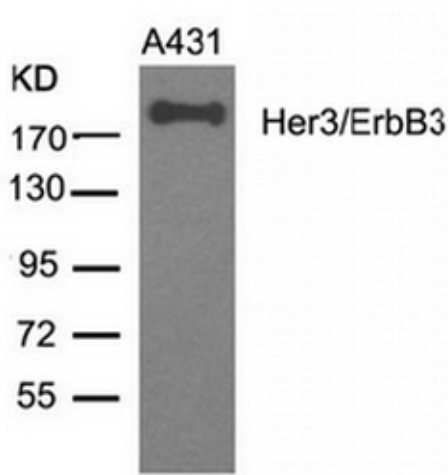
**Product images:**

Figure 3. Western blot analysis of extracts from A431 cells using Her3/ErbB3 Antibody.

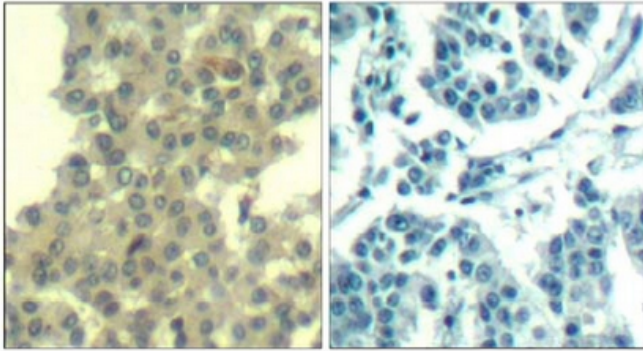


Figure 1. Immunohistochemical analysis of paraffin-embedded human breast carcinoma tissue using Her3/ErbB3 Antibody. (Left) and the same antibody preincubated with blocking peptide (Right).

Peptide

-

+

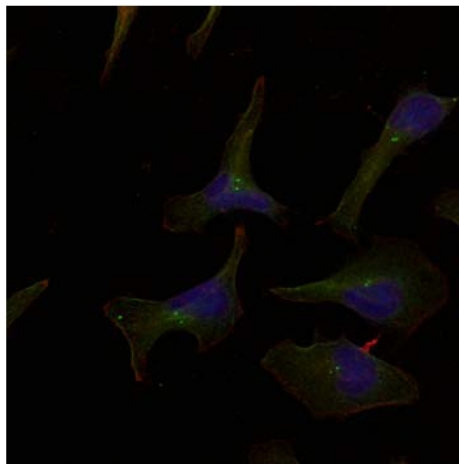


Figure 2. Immunofluorescence staining of methanol-fixed HeLa cells using Her3/ErbB3 Antibody. (Red).