

## Product datasheet for **AP08086PU-N**

### Cofilin 1 (CFL1) (+ Cofilin 2) Rabbit Polyclonal Antibody

#### Product data:

Product Type:	Primary Antibodies
Applications:	IF, IHC, WB
Recommended Dilution:	<b>Western Blot:</b> 1/500 - 1/1000. <b>Immunofluorescence:</b> 1/100 - 1/200. <b>Immunohistochemistry on Paraffin-Embedded Sections:</b> 1/50 - 1/100.
Reactivity:	Human, Mouse
Host:	Rabbit
Clonality:	Polyclonal
Immunogen:	The antiserum was produced against synthesized non-phosphopeptide derived from human Cofilin1/Cofilin2 around the phosphorylation site of Tyrosine 86~90(A-T-Y-E-T).
Specificity:	This antibody detects endogenous levels of total Cofilin-1/2 protein.
Formulation:	PBS (without Mg <sup>2+</sup> and Ca <sup>2+</sup> ), pH 7.4, 150 mM NaCl, 0.02% Sodium Azide and 50% Glycerol. State: Aff - Purified State: Liquid purified Ig fraction.
Concentration:	lot specific
Purification:	Immunoaffinity Chromatography.
Conjugation:	Unconjugated
Storage:	Store the antibody (in aliquots) at -20°C. Avoid repeated freezing and thawing.
Stability:	Shelf life: One year from despatch.
Gene Name:	cofilin 1
Database Link:	<a href="#">Entrez Gene 12631 Mouse</a> <a href="#">Entrez Gene 1072 Human</a> <a href="#">P23528</a>



[View online »](#)

**Background:**

Cofilin is ubiquitously expressed in eukaryotic cells where it binds to Actin, thereby regulating the rapid cycling of Actin assembly and disassembly essential for cellular viability. Cofilin is a low molecular weight protein that binds to filamentous F-Actin by bridging two longitudinally associated Actin subunits changing the F-Actin filament twist. This process is allowed by the dephosphorylation of Cofilin Ser 3 by factors such as opsonized zymosan. Lim kinase 1, a serine kinase, phosphorylates Cofilin and renders it unable to bind and depolymerise F-Actin.

**Synonyms:**

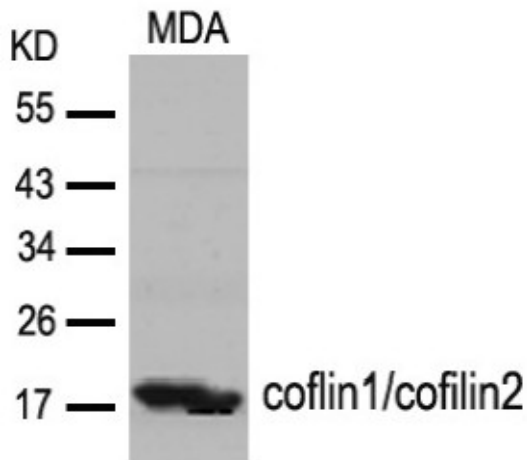
CFL1, CFL, p18

**Protein Families:**

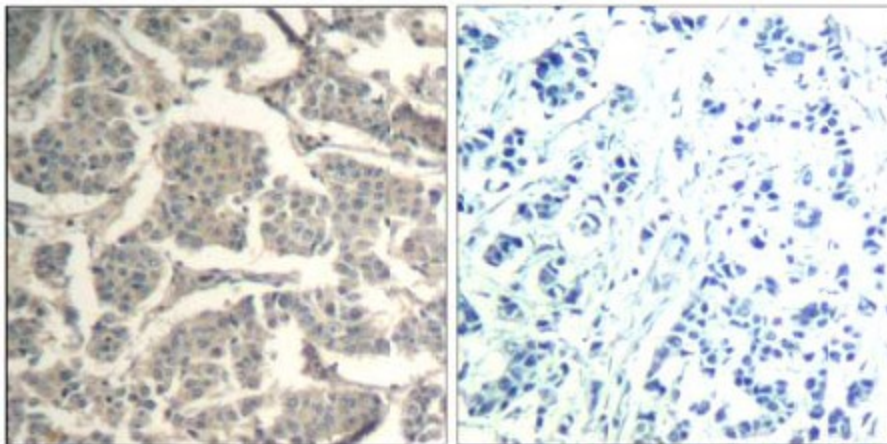
Druggable Genome

**Protein Pathways:**

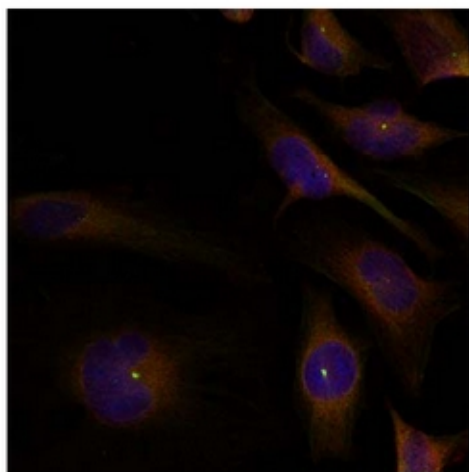
Axon guidance, Fc gamma R-mediated phagocytosis, Regulation of actin cytoskeleton

**Product images:**


Western blot analysis of extracts from MDA cells using cofilin1/cofilin2 antibody



Immunohistochemical analysis of paraffin-embedded human breast carcinoma tissue using cofilin1/cofilin2 antibody (left) or the same antibody preincubated with blocking peptide (right)



Immunofluorescence staining of methanol-fixed HeLa cells using Cofilin-1/2 Antibody (Red).