

Product datasheet for **AP08083PU-N**

AKT1 Rabbit Polyclonal Antibody

Product data:

Product Type:	Primary Antibodies
Applications:	IF, IHC, WB
Recommended Dilution:	Western Blot: 1/500 - 1/1000. Immunohistochemistry on paraffin sections: 1/50 - 1/100. Immunofluorescence: 1/50 - 1/100.
Reactivity:	Human, Mouse, Rat
Host:	Rabbit
Clonality:	Polyclonal
Immunogen:	The antiserum was produced against synthesized non-phosphopeptide derived from human AKT1 around the phosphorylation site of Threonine 450 (T-I-TP-P-P).
Specificity:	This antibody detects endogenous levels of total AKT1 protein.
Formulation:	PBS (without Mg ²⁺ and Ca ²⁺), pH 7.4, 150 mM NaCl, 0.02% Sodium Azide and 50% Glycerol. State: Aff - Purified State: Liquid purified Ig fraction.
Concentration:	lot specific
Purification:	Immunoaffinity Chromatography.
Conjugation:	Unconjugated
Storage:	Store the antibody (in aliquots) at -20°C. Avoid repeated freezing and thawing.
Stability:	Shelf life: One year from despatch.
Gene Name:	AKT serine/threonine kinase 1
Database Link:	Entrez Gene 207 Human P31749



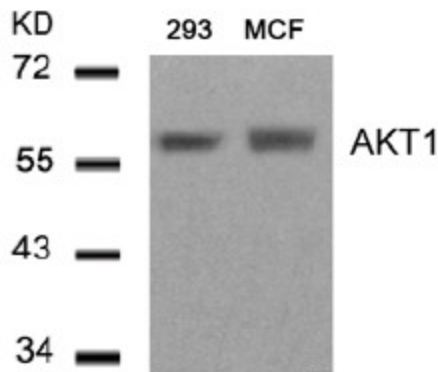
[View online »](#)

Background:

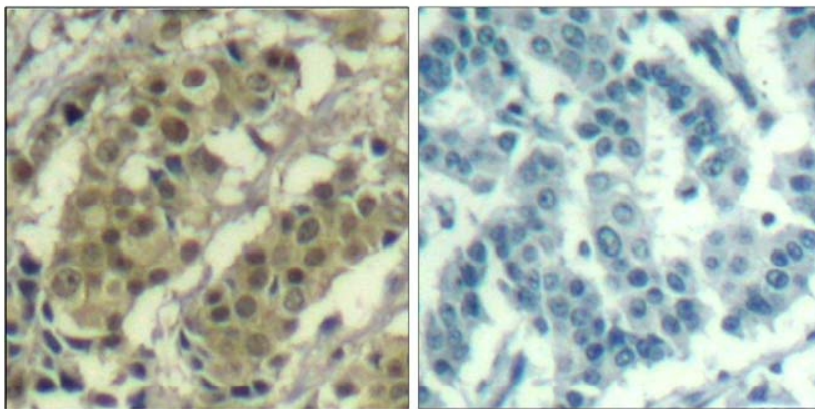
The serine threonine protein kinase encoded by the AKT1 gene is catalytically inactive in serum starved primary and immortalized fibroblasts. AKT1 and the related AKT2 are activated by platelet derived growth factor. The activation is rapid and specific. In the developing nervous system AKT is a critical mediator of growth factor induced neuronal survival. Survival factors can suppress apoptosis in a transcription independent manner by activating the serine/threonine kinase AKT1, which then phosphorylates and inactivates components of the apoptotic machinery. Multiple alternatively spliced transcript variants have been found for this gene (referenced from entrez gene).

Synonyms:

Akt-1, RAC-PK-alpha, Protein kinase B, C-AKT

Product images:


Western blot analysis of extracts from 293 and MCF cells using AKT1 antibody

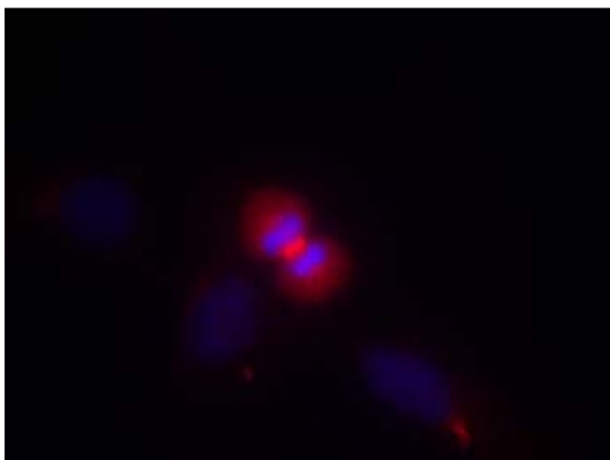


Immunohistochemical analysis of paraffin-embedded human breast carcinoma tissue using AKT1 Antibody

Peptide

-

+



Immunofluorescence staining of methanol-fixed HeLa cells using AKT1 Antibody (Red).