

## Product datasheet for **AP08081PU-N**

### PP2A-alpha (PPP2CA) Rabbit Polyclonal Antibody

#### Product data:

Product Type:	Primary Antibodies
Applications:	WB
Recommended Dilution:	Western Blot (1/500-1/1000).
Reactivity:	Human, Mouse, Rat
Host:	Rabbit
Clonality:	Polyclonal
Immunogen:	The antiserum was produced against a synthesized peptide Corresponding to the amino terminal sequence from human PP2A-alpha protein ("KQLSESQVKSL").
Specificity:	PP2A-alpha antibody detects endogenous levels of total PP2A-alpha protein.
Formulation:	PBS (without Mg <sup>2+</sup> and Ca <sup>2+</sup> ), pH 7.4, 150 mM NaCl, 0.02% Sodium Azide and 50% Glycerol. State: Aff - Purified State: Liquid purified Ig fraction.
Concentration:	lot specific
Purification:	Immunoaffinity Chromatography.
Conjugation:	Unconjugated
Storage:	Store the antibody (in aliquots) at -20°C. Avoid repeated freezing and thawing.
Stability:	Shelf life: One year from despatch.
Gene Name:	protein phosphatase 2 catalytic subunit alpha
Database Link:	<a href="#">Entrez Gene 5515 Human P67775</a>



[View online »](#)

**Background:**

Protein phosphatase 2A (PP2A) is the most abundant phosphatase specific for serine and threonine phosphorylation in mammalian cells. Dephosphorylation of substrates targeted by PP2A plays a vital role in a large variety of cellular processes including signal transduction, regulation of the cell cycle, gene expression and development. Protein phosphatase 2 is one of the four major Ser/Thr phosphatases, and it is implicated in the negative control of cell growth and division. It consists of a common heteromeric core enzyme, which is composed of a catalytic subunit and a constant regulatory subunit, that associates with a variety of regulatory subunits. The constant regulatory subunit alpha serves as a scaffolding molecule to coordinate the assembly of the catalytic subunit and a variable regulatory beta subunit.

**Synonyms:**

Protein Phosphatase 2A, PP2A-alpha, Replication protein C

**Product images:**

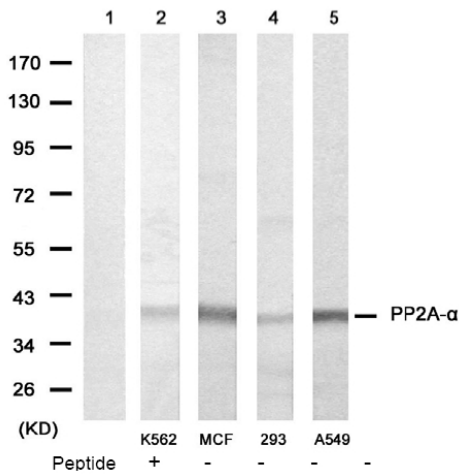


Figure 1. Western blot analysis of extracts from various cells using PP2A-alpha antibody (Lane 1, 2, 3, 4 and 5).