

Product datasheet for **AP08079PU-N**

MAP1LC3A Rabbit Polyclonal Antibody

Product data:

Product Type:	Primary Antibodies
Applications:	IF, WB
Recommended Dilution:	Western blot: 1/500~1/1000. Immunofluorescence: 1/100~1/200.
Reactivity:	Human, Mouse, Rat
Host:	Rabbit
Clonality:	Polyclonal
Immunogen:	The antiserum was produced against a synthesized peptide Corresponding to the amino terminal sequence from Human LC3A protein.
Specificity:	This antibody detects endogenous levels of total LC3A/MAP1LC3A protein.
Formulation:	PBS (without Mg ²⁺ and Ca ²⁺), pH 7.4, 150 mM NaCl, 0.02% Sodium Azide and 50% Glycerol State: Aff - Purified State: Liquid purified Ig fraction
Concentration:	lot specific
Purification:	Immunoaffinity Chromatography using epitope-specific immunogen
Conjugation:	Unconjugated
Storage:	Store the antibody (in aliquots) at -20°C. Avoid repeated freezing and thawing.
Stability:	Shelf life: One year from despatch.
Gene Name:	microtubule associated protein 1 light chain 3 alpha
Database Link:	Entrez Gene 84557 Human Q9H492



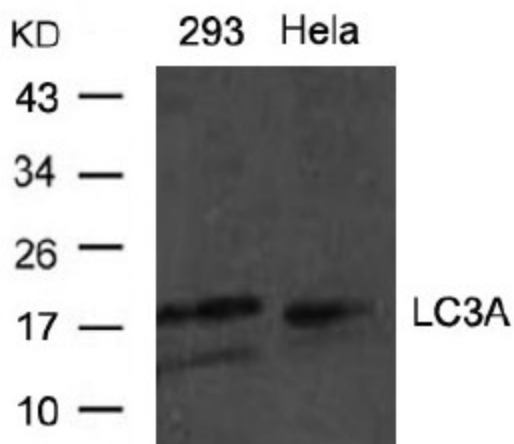
[View online »](#)

Background:

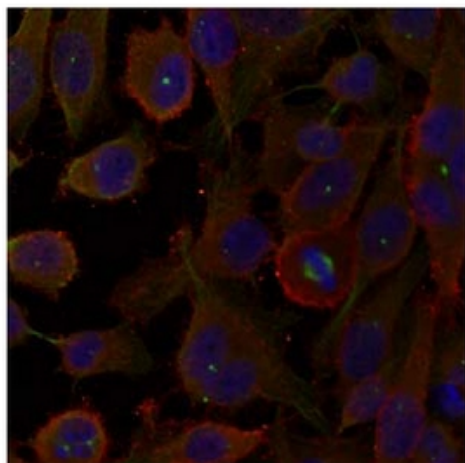
Microtubule-associated MAP1LC3A constitutes nearly half of the mass of all the microtubule associated proteins that copurify with brain microtubules. MAP1LC3A is one of three human orthologs of the rat Map1LC3, (named MAP1LC3A, MAP1LC3B, and MAP1LC3C). The three isoforms of human MAP1LC3 exhibit distinct expression patterns in different human tissues and also differ in their post-translation modifications. MAP1LC3A and MAP1LC3C are produced by the proteolytic cleavage after the conserved C-terminal Gly residue; MAP1LC3B does not undergo C-terminal cleavage and exists in a single modified form.

Synonyms:

MAP1A / 1B light chain 3 A, MAP1A/1B light chain 3 A, MAP1A/MAP1B LC3 A, MAP1 light chain 3-like protein 1, MAP1LC3A, LC3A

Product images:

Western Blot analysis of extracts from HeLa and 293 cells using LC3A antibody



Immunofluorescence staining of methanol-fixed HeLa cells using LC3A antibody (Red).