

Product datasheet for **AP08078PU-S**

NIBAN2 Rabbit Polyclonal Antibody

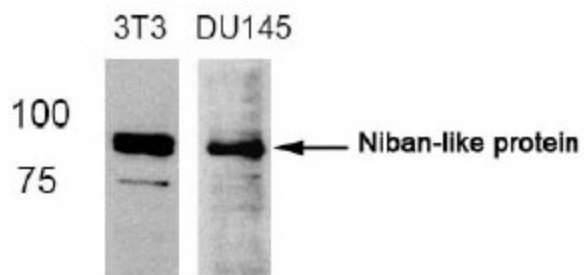
Product data:

Product Type:	Primary Antibodies
Applications:	IF, WB
Recommended Dilution:	Western Blot: 1/500~1/1000. Immunofluorescence: 1/100~1/200.
Reactivity:	Human, Mouse
Host:	Rabbit
Clonality:	Polyclonal
Immunogen:	The antiserum was produced against synthesized non-phosphopeptide derived from human Niban Like Protein 1 around the phosphorylation site of Serine 712 (Q-V-S- <i>Sp</i> -P).
Specificity:	This antibody detects endogenous levels of total Niban Like Protein 1.
Formulation:	PBS (without Mg ²⁺ and Ca ²⁺), pH 7.4, 150 mM NaCl, 0.02% Sodium Azide and 50% Glycerol. State: Aff - Purified State: Liquid purified Ig fraction.
Concentration:	lot specific
Purification:	Immunoaffinity Chromatography using epitope-specific immunogen.
Conjugation:	Unconjugated
Storage:	Store the antibody (in aliquots) at -20°C. Avoid repeated freezing and thawing.
Stability:	Shelf life: One year from despatch.
Gene Name:	family with sequence similarity 129 member B
Database Link:	Entrez Gene 64855 Human Q96TA1
Background:	Niban-like protein (NIBL) is a member of the niban family of proteins and contains a pleckstrin homology (PH) domain which is found in proteins involved in intracellular signaling and cytoskeletal organization.
Synonyms:	FAM129B, Meg-3

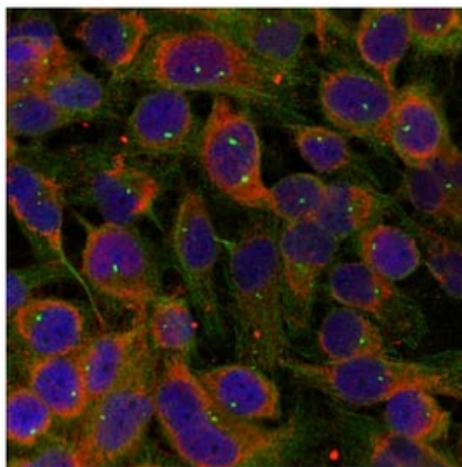


[View online »](#)

Product images:



Western Blot analysis of extracts from 3T3 and DU145 cells using Niban-like protein antibody



Immunofluorescence staining of methanol-fixed HeLa cells using Niban Like Protein 1 antibody (Red).