

## Product datasheet for **AP08078PU-N**

### **NIBAN2 Rabbit Polyclonal Antibody**

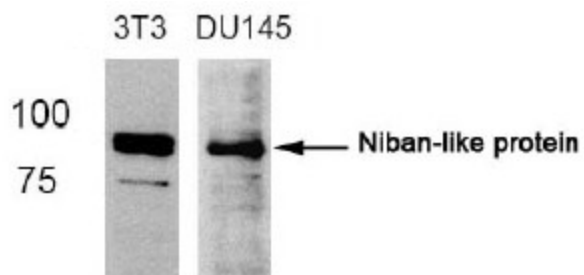
#### **Product data:**

<b>Product Type:</b>	Primary Antibodies
<b>Applications:</b>	IF, WB
<b>Recommended Dilution:</b>	Western Blot: 1/500~1/1000. Immunofluorescence: 1/100~1/200.
<b>Reactivity:</b>	Human, Mouse
<b>Host:</b>	Rabbit
<b>Clonality:</b>	Polyclonal
<b>Immunogen:</b>	The antiserum was produced against synthesized non-phosphopeptide derived from human Niban Like Protein 1 around the phosphorylation site of Serine 712 (Q-V-S-Sp-P).
<b>Specificity:</b>	This antibody detects endogenous levels of total Niban Like Protein 1.
<b>Formulation:</b>	PBS (without Mg <sup>2+</sup> and Ca <sup>2+</sup> ), pH 7.4, 150 mM NaCl, 0.02% Sodium Azide and 50% Glycerol. State: Aff - Purified State: Liquid purified Ig fraction.
<b>Concentration:</b>	lot specific
<b>Purification:</b>	Immunoaffinity Chromatography using epitope-specific immunogen.
<b>Conjugation:</b>	Unconjugated
<b>Storage:</b>	Store the antibody (in aliquots) at -20°C. Avoid repeated freezing and thawing.
<b>Stability:</b>	Shelf life: One year from despatch.
<b>Database Link:</b>	<a href="#">Entrez Gene 64855 Human Q96TA1</a>
<b>Background:</b>	Niban-like protein (NIBL) is a member of the niban family of proteins and contains a pleckstrin homology (PH) domain which is found in proteins involved in intracellular signaling and cytoskeletal organization.
<b>Synonyms:</b>	FAM129B, Meg-3

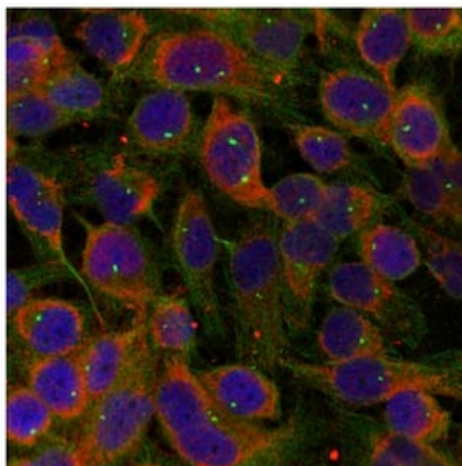


[View online »](#)

## Product images:



Western Blot analysis of extracts from 3T3 and DU145 cells using Niban-like protein antibody



Immunofluorescence staining of methanol-fixed HeLa cells using Niban Like Protein 1 antibody (Red).