

Product datasheet for **AP08073PU-S**

SMAD2 Rabbit Polyclonal Antibody

Product data:

Product Type:	Primary Antibodies
Applications:	IHC, WB
Recommended Dilution:	Western Blot (1/500-1/1000). Immunohistochemistry (1/50-1/100).
Reactivity:	Human, Mouse, Rat
Host:	Rabbit
Clonality:	Polyclonal
Immunogen:	The antiserum was produced against synthesized non-phosphopeptide derived from human SMAD2 around the phosphorylation site of Threonine 220 (P-E-TP-P-P).
Specificity:	This antibody detects endogenous levels of total SMAD2 protein.
Formulation:	PBS (without Mg ²⁺ and Ca ²⁺), pH 7.4, 150 mM NaCl, 0.02% Sodium Azide and 50% Glycerol. State: Aff - Purified State: Liquid purified Ig fraction.
Concentration:	lot specific
Purification:	Immunoaffinity Chromatography.
Conjugation:	Unconjugated
Storage:	Store the antibody (in aliquots) at -20°C. Avoid repeated freezing and thawing.
Stability:	Shelf life: One year from despatch.
Gene Name:	SMAD family member 2
Database Link:	Entrez Gene 4087 Human Q15796
Synonyms:	SMAD family member 2, SMAD-2, SMAD 2, MADH2, MAD homolog 2, MADR2, Mad-related protein 2, JV18-1



[View online »](#)

Product images:

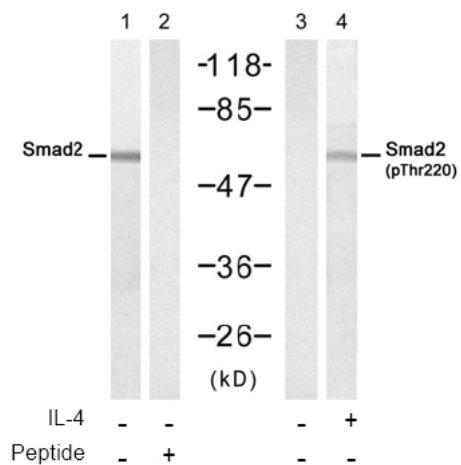
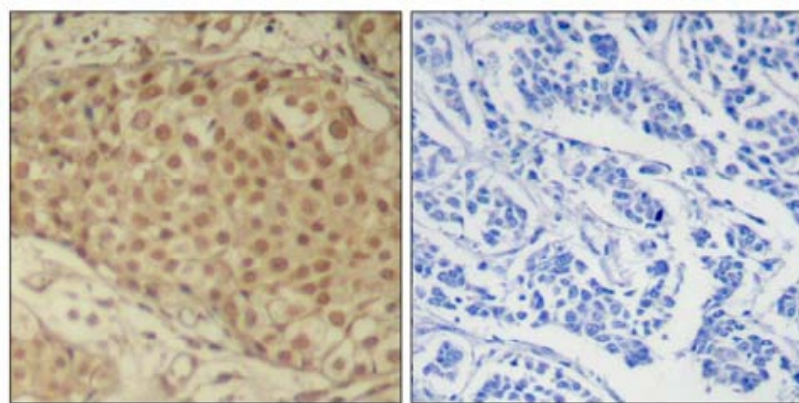


Figure 2. Western blot analysis of extract from HeLa cells untreated or treated with IL-4 (100ng/mL, 30min), using SMAD2 Antibody AP08073PU (Lane 1 and 2) and SMAD2 (Phospho-Thr220) Antibody AP08026PU (Lane 3 and 4).



Peptide - +

Figure 1. Immunohistochemical analysis of paraffin-embedded human breast carcinoma tissue using SMAD2 Antibody (AP08073PU).