

Product datasheet for **AP08064PU-S**

CD61 (ITGB3) Rabbit Polyclonal Antibody

Product data:

Product Type:	Primary Antibodies
Applications:	WB
Recommended Dilution:	Western Blot (1/500-1/1000).
Reactivity:	Human, Mouse
Host:	Rabbit
Clonality:	Polyclonal
Immunogen:	The antiserum was produced against synthesized non-phosphopeptide derived from human Integrin beta 3 around the phosphorylation site of Tyrosine 785 (I-T-YP-R-G).
Specificity:	Integrin beta 3 Antibody AP08064PU detects endogenous levels of total Integrin beta 3 protein.
Formulation:	PBS (without Mg ²⁺ and Ca ²⁺), pH 7.4, 150 mM NaCl, 0.02% Sodium Azide and 50% Glycerol. State: Aff - Purified State: Liquid purified Ig fraction.
Concentration:	lot specific
Purification:	Immunoaffinity Chromatography.
Conjugation:	Unconjugated
Storage:	Store the antibody (in aliquots) at -20°C. Avoid repeated freezing and thawing.
Stability:	Shelf life: One year from despatch.
Gene Name:	integrin subunit beta 3
Database Link:	Entrez Gene 3690 Human P05106
Background:	Human Integrin beta 3 (CD61) antigen is a 90-110 kDa glycoprotein polypeptide which is expressed on platelets, megakaryocytes, macrophages, osteoclasts and synovial lining cells. The platelet glycoprotein is the integrin beta 3 chain of the vitronectin receptor and GPIIb/IIIa complex.
Synonyms:	Integrin beta-3, GP3A, GPIIIa



[View online »](#)

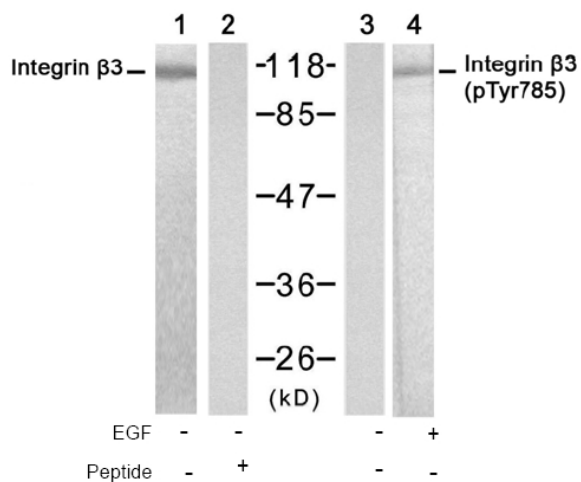
Product images:


Figure 1. Western blot analysis of extract from HUVEC cells untreated or treated with EGF (200ng/ml, 15min), using integrin beta 3 antibody AP08064PU (Lane 1 and 2) and Integrin beta 3 (phospho-Tyr785) antibody AP02524PU (Lane 3 and 4).