

Product datasheet for **AP08059PU-S**

GABA A Receptor beta 1 (GABRB1) Rabbit Polyclonal Antibody

Product data:

Product Type:	Primary Antibodies
Applications:	WB
Recommended Dilution:	Western Blot (1/500-1/1000).
Reactivity:	Human, Mouse, Rat
Host:	Rabbit
Clonality:	Polyclonal
Immunogen:	The antiserum was produced against synthesized non-phosphopeptide derived from human GABRB1 around the phosphorylation site of Serine 434 (R-A-SP-Q-L).
Specificity:	This antibody detects endogenous levels of total GABRB1 protein.
Formulation:	PBS (without Mg ²⁺ and Ca ²⁺), pH 7.4, 150 mM NaCl, 0.02% Sodium Azide and 50% Glycerol. State: Aff - Purified State: Liquid purified Ig fraction.
Concentration:	lot specific
Purification:	Immunoaffinity Chromatography.
Conjugation:	Unconjugated
Storage:	Store the antibody (in aliquots) at -20°C. Avoid repeated freezing and thawing.
Stability:	Shelf life: One year from despatch.
Gene Name:	gamma-aminobutyric acid type A receptor beta1 subunit
Database Link:	Entrez Gene 2560 Human P18505
Background:	GABA A Receptors are ligand-gated chloride channels that play a role as inhibitory neurotransmitters. They are known targets for certain classes of environmental and pharmaceutical compounds because a number of drugs interact with binding sites on GABA (A). Some of these drugs include benzodiazepines, anticonvulsants, and anesthetics. GABA A Receptors are comprised of subunits and these are further classified into 3 major groups (alpha, beta, and gamma). The subunits determine the pharmacological characteristics.
Synonyms:	GABRB-1, GABA A receptor subunit beta-1



[View online »](#)

Product images:

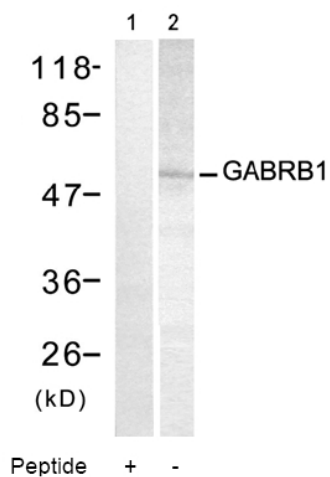


Figure 1. Western blot analysis of extracts from PC12 cells using GABRB1 antibody AP08059PU (Lane 1 and 2).