

Product datasheet for **AP08058PU-S**

RAF1 Rabbit Polyclonal Antibody

Product data:

Product Type:	Primary Antibodies
Applications:	IHC, WB
Recommended Dilution:	Western Blot (1/500-1/1000). Immunohistochemistry (1/50-1/100).
Reactivity:	Human, Mouse
Host:	Rabbit
Clonality:	Polyclonal
Immunogen:	The antiserum was produced against synthesized non-phosphopeptide derived from human Raf1 around the phosphorylation site of Serine 338 (R-D-SP-S-Y).
Specificity:	This antibody detects endogenous levels of total Raf1 protein.
Formulation:	PBS (without Mg ²⁺ and Ca ²⁺), pH 7.4, 150 mM NaCl, 0.02% Sodium Azide and 50% Glycerol. State: Aff - Purified State: Liquid purified Ig fraction.
Concentration:	lot specific
Purification:	Immunoaffinity Chromatography.
Conjugation:	Unconjugated
Storage:	Store the antibody (in aliquots) at -20°C. Avoid repeated freezing and thawing.
Stability:	Shelf life: One year from despatch.
Gene Name:	Raf-1 proto-oncogene, serine/threonine kinase
Database Link:	Entrez Gene 5894 Human P04049
Synonyms:	C-RAF, Raf-1, cRaf



[View online »](#)

Product images:

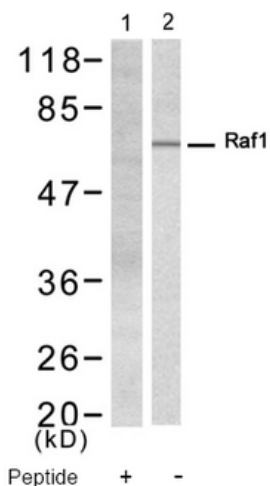


Figure 2. Western blot analysis of extract from 293 cell, using Raf1 Antibody AP08058PU (Lane 1 and 2).

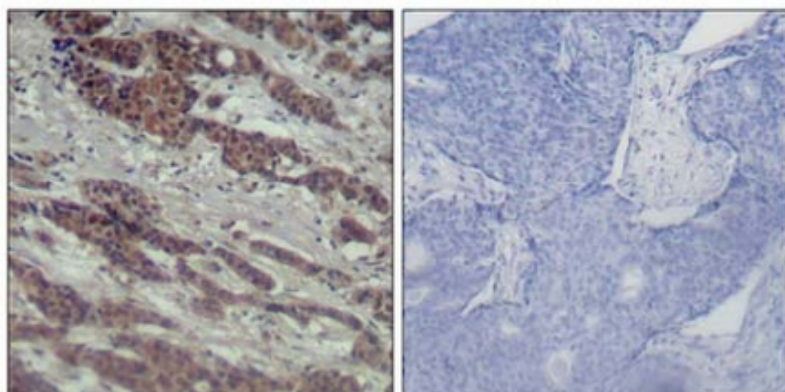


Figure 1. Immunohistochemical analysis of paraffin-embedded human breast carcinoma tissue using Raf1 Antibody AP08058PU.

Peptide - +