

## Product datasheet for **AP08055PU-N**

### eNOS (NOS3) Rabbit Polyclonal Antibody

#### Product data:

Product Type:	Primary Antibodies
Applications:	IF, WB
Recommended Dilution:	Western blot: 1/500-1/1000. Immunofluorescence: 1/100-1/200.
Reactivity:	Human, Mouse, Rat
Host:	Rabbit
Clonality:	Polyclonal
Immunogen:	The antiserum was produced against synthesized non-phosphopeptide derived from human eNOS around the phosphorylation site of Serine 1177 (T-Q-SP-F-S).
Specificity:	eNOS Antibody AP08055PU detects endogenous levels of total eNOS protein.
Formulation:	PBS (without Mg <sup>2+</sup> and Ca <sup>2+</sup> ), pH 7.4, 150 mM NaCl, 0.02% Sodium Azide and 50% Glycerol. State: Aff - Purified State: Liquid purified Ig fraction.
Concentration:	lot specific
Purification:	Immunoaffinity Chromatography using epitope-specific immunogen.
Conjugation:	Unconjugated
Storage:	Store the antibody (in aliquots) at -20°C. Avoid repeated freezing and thawing.
Stability:	Shelf life: One year from despatch.
Gene Name:	nitric oxide synthase 3
Database Link:	<a href="#">Entrez Gene 4846 Human P29474</a>
Background:	eNOS is a calcium/calmodulin dependent enzyme which undergoes several post translational modifications, including acylation with myristate and palmitate, and phosphorylation on numerous residues. As with the other members of the NOS family, eNOS derives the diffusible multifunctional second messenger NO from L arginine through a series of reactions in which L citrulline is an intermediate. eNOS plays an important role in controlling vascular tone, platelet aggregation, and cardiac myocyte function.



[View online »](#)

Synonyms: Endothelial NOS, EC-NOS, NOS type III, Constitutive NOS, eNOS

### Product images:

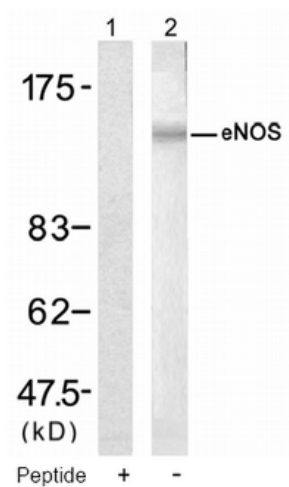


Figure 1. Western blot analysis of extract from HUVEC cell, using eNOS Antibody (Lane 1 and 2).

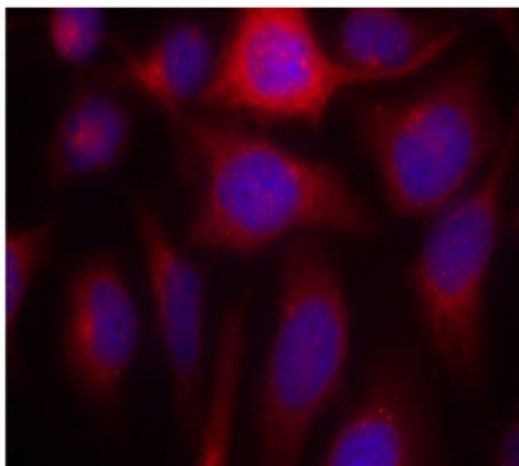


Figure 2. Immunofluorescence staining of methanol-fixed HeLa cells using eNOS antibody (Red).