

Product datasheet for **AP08053PU-N**

p21 (CDKN1A) Rabbit Polyclonal Antibody

Product data:

Product Type:	Primary Antibodies
Applications:	WB
Recommended Dilution:	Western Blot (1/500-1/1000).
Reactivity:	Human
Host:	Rabbit
Clonality:	Polyclonal
Immunogen:	Peptide Sequence around amino acids 143~147 (R-Q-T-S-M) derived from Human p21Cip1.
Specificity:	This antibody detects endogenous levels of total p21Cip1 protein.
Formulation:	PBS (without Mg ²⁺ and Ca ²⁺), pH 7.4, 150 mM NaCl, 0.02% Sodium Azide and 50% Glycerol. State: Aff - Purified State: Liquid purified Ig fraction.
Concentration:	lot specific
Purification:	Immunoaffinity Chromatography.
Conjugation:	Unconjugated
Storage:	Store the antibody (in aliquots) at -20°C. Avoid repeated freezing and thawing.
Stability:	Shelf life: One year from despatch.
Gene Name:	cyclin-dependent kinase inhibitor 1A
Database Link:	Entrez Gene 1026 Human P38936
Background:	Cell cycle progression is regulated by cyclins and their cognate Cdks. p21 (WAF1/CIP1) inhibits the activity of each member of the cyclin/Cdk family, and overexpression of this protein inhibits the proliferation of mammalian cells. The expression of p21 is inducible by a wide range of stress stimuli. p21 is tightly regulated at the transcriptional level by p53, and probably serves as the effector of p53 cell cycle control.
Synonyms:	CAP20, CDKN1, CIP1, MDA6, MDA-6, PIC1, SDI1, WAF1
Note:	Molecular Weight: 21 kDa



[View online »](#)

Product images:

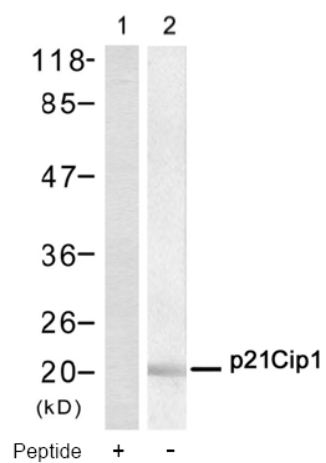


Figure 1. Western blot analysis of extract from HeLa cell using p21Cip1 Antibody and the same antibody preincubated with blocking peptide.