

Product datasheet for **AP08052PU-S**

ATM Rabbit Polyclonal Antibody

Product data:

Product Type:	Primary Antibodies
Applications:	IF, WB
Recommended Dilution:	Western Blot: 1/500-1/1000. Immunofluorescence: 1/100-1/200.
Reactivity:	Human, Mouse
Host:	Rabbit
Clonality:	Polyclonal
Immunogen:	The antiserum was produced against synthesized non-phosphopeptide derived from human ATM around the phosphorylation site of Serine 1981 (E-G-SP-Q-S).
Specificity:	ATM Antibody AP08052PU detects endogenous levels of total ATM protein.
Formulation:	PBS (without Mg ²⁺ and Ca ²⁺), pH 7.4, 150 mM NaCl, 0.02% Sodium Azide and 50% Glycerol State: Aff - Purified State: Liquid purified Ig fraction
Concentration:	lot specific
Purification:	Immunoaffinity Chromatography using epitope-specific immunogen
Conjugation:	Unconjugated
Storage:	Upon receipt, store undiluted (in aliquots) at -20°C. Avoid repeated freezing and thawing.
Stability:	Shelf life: one year from despatch.
Gene Name:	ATM serine/threonine kinase
Database Link:	Entrez Gene 472 Human Q13315
Background:	ATM is a 370 kDa nuclear phosphoprotein involved in the autosomal recessive disease Ataxia Telangiectasia (AT). ATM belongs to a novel family of proteins associated with cell cycle regulation, apoptosis, and response to DNA damage repair (DNA damage caused by such things as ionizing irradiation activates ATM kinase). The C terminal region has extensive homology to the catalytic domains of Phosphatidylinositol 3 kinases (PI3 kinases).
Synonyms:	Serine-protein kinase ATM, Ataxia telangiectasia mutated, A-T mutated, ATDC, TEL1, TELO1



[View online »](#)

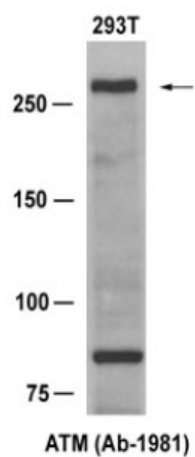
Product images:

Figure 1. Western blot analysis of extract from 293T cells, using ATM Antibody.

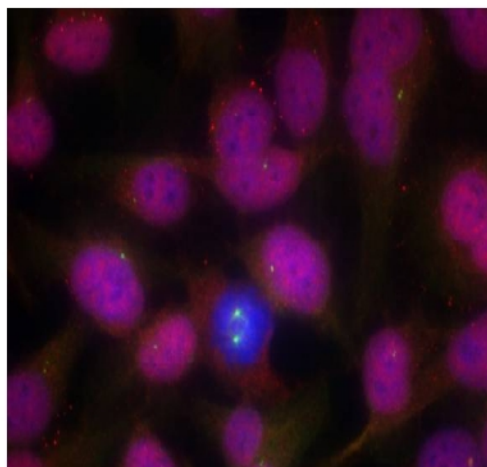


Figure 2. Immunofluorescence staining of methanol-fixed HeLa cells using ATM Antibody (Red).