

## Product datasheet for **AP08045PU-N**

### p53 (TP53) Rabbit Polyclonal Antibody

#### Product data:

Product Type:	Primary Antibodies
Applications:	WB
Recommended Dilution:	Western Blot: 1/500-1/1000.
Reactivity:	Human, Mouse, Rat
Host:	Rabbit
Clonality:	Polyclonal
Immunogen:	Synthetic peptide KLH conjugated around amino acids 4~8 (P-Q-S-D-P) derived from Human p53
Specificity:	This antibody detects endogenous levels of total p53 protein.
Formulation:	PBS (without Mg <sup>2+</sup> and Ca <sup>2+</sup> ), pH 7.4, 150 mM NaCl, 0.02% Sodium Azide and 50% Glycerol. State: Aff - Purified State: Liquid purified Ig fraction.
Concentration:	lot specific
Purification:	Affinity Chromatography using epitope-specific peptide.
Conjugation:	Unconjugated
Storage:	Upon receipt, store undiluted (in aliquots) at -20°C. Avoid repeated freezing and thawing.
Stability:	Shelf life: one year from despatch.
Gene Name:	tumor protein p53
Database Link:	<a href="#">Entrez Gene 7157 Human P04637</a>



[View online »](#)

**Background:**

p53, a 53 kDa protein, binds to a DNA consensus sequence, the p53 response element, and regulates normal cell cycle events by activating transcription of genes involved either in progression through the cell cycle, or causing arrest in G1 when the genome is damaged. In most transformed and tumor cells the concentration of p53 is increased 5-1000 fold over the concentration in normal cells, principally due to the increased half-life (4 hrs) compared to that of wild-type (20 min). p53 localizes in the nucleus, but is detectable at the plasma membrane during mitosis and certain mutations also modulate cytoplasmic/nuclear distribution. p53 downregulates Bcl-2 expression and upregulates Bax expression, but may not always be necessary for apoptosis.

**Synonyms:**

Cellular tumor antigen p53, Tumor suppressor p53, Phosphoprotein p53, NY-CO-13

**Note:**

Molecular Weight: 53 kDa

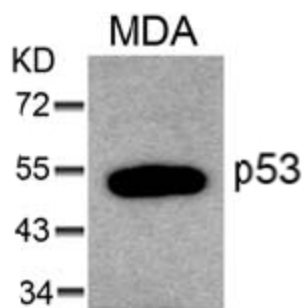
**Product images:**

Figure 1. Western blot analysis of extracts from MDA cells using p53 antibody