

## Product datasheet for **AP08044PU-S**

### Progesterone Receptor (PGR) Rabbit Polyclonal Antibody

#### Product data:

Product Type:	Primary Antibodies
Applications:	IF, WB
Recommended Dilution:	Western Blot (1/500-1/1000). Immunofluorescence (1/100-1/200).
Reactivity:	Human
Host:	Rabbit
Clonality:	Polyclonal
Immunogen:	The antiserum was produced against synthesized non-phosphopeptide derived from human Progesterone Receptor around the phosphorylation site of Serine 190 (G-L-SP-P-A).
Specificity:	Progesterone Receptor Antibody AP08044PU detects endogenous levels of total progesterone receptor protein.
Formulation:	PBS (without Mg <sup>2+</sup> and Ca <sup>2+</sup> ), pH 7.4, 150 mM NaCl, 0.02% Sodium Azide and 50% Glycerol. State: Aff - Purified State: Liquid purified Ig fraction.
Concentration:	lot specific
Purification:	Immunoaffinity Chromatography.
Conjugation:	Unconjugated
Storage:	Store the antibody (in aliquots) at -20°C. Avoid repeated freezing and thawing.
Stability:	Shelf life: One year from despatch.
Gene Name:	progesterone receptor
Database Link:	<a href="#">Entrez Gene 5241 Human P06401</a>
Synonyms:	PR, PGR, NR3C3



[View online »](#)

Product images:

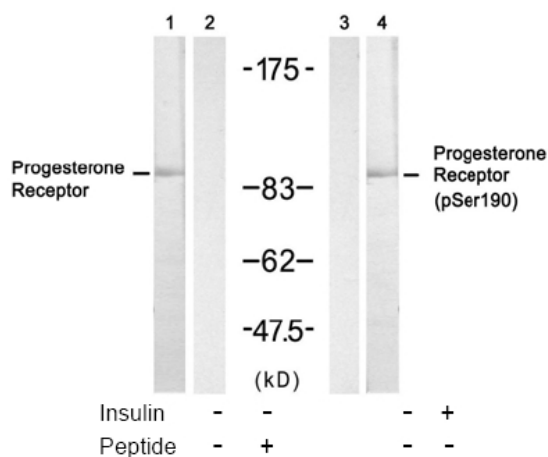


Figure 1. Western blot analysis of extract from SKOV3 cell untreated or treated with insulin, using Progesterone Receptor antibody AP08043PU (Lane 1 and 2) and Progesterone Receptor (phospho-Ser190) antibody AP02372PU (Lane 3 and 4).

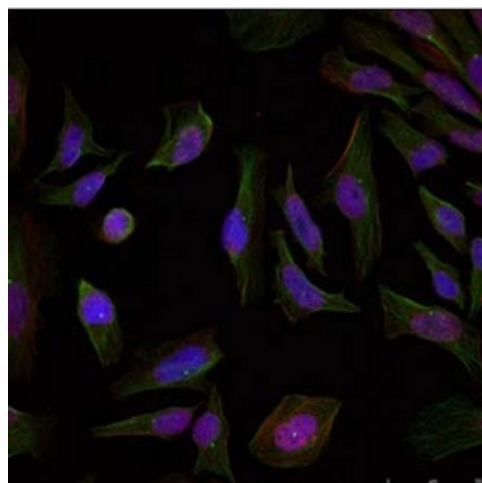


Figure 2. Immunofluorescence staining of methanol-fixed HeLa cells using Progesterone Receptor Antibody (AP08044PU, Red).