

Product datasheet for **AP08042PU-N**

CBL pTyr700 Rabbit Polyclonal Antibody

Product data:

Product Type:	Primary Antibodies
Applications:	IF, IHC, WB
Recommended Dilution:	Immunofluorescence: 1/100 - 1/200. Immunohistochemistry on Paraffin-Embedded Sections: 1/50 - 1/100. Western Blot: 1/500 - 1/1000; Incubate membrane with diluted antibody in 5% nonfat milk, 1X TBS, 0,1% Tween-20 at 4°C with gentle shaking, overnight.
Reactivity:	Human
Host:	Rabbit
Clonality:	Polyclonal
Immunogen:	Synthetic phosphopeptide derived from human c-Cbl around the phosphorylation site of Tyrosine 770 (T-E-YP-M-T).
Specificity:	This Antibody detects endogenous levels of c-Cbl only when phosphorylated at Tyrosine 770.
Formulation:	PBS (without Mg ²⁺ and Ca ²⁺), pH 7.4, 150 mM NaCl, 0.02% Sodium Azide and 50% Glycerol. State: Aff - Purified State: Liquid purified Ig fraction
Concentration:	lot specific
Purification:	Affinity Chromatography
Conjugation:	Unconjugated
Storage:	Store the antibody (in aliquots) at -20°C. Avoid repeated freezing and thawing.
Stability:	Shelf life: One year from despatch.
Gene Name:	Cbl proto-oncogene
Database Link:	Entrez Gene 867 Human P22681



[View online »](#)

Background:

The proto-oncogene c-CBL was initially identified as the cellular homologue of v-CBL oncogene that induces pre-B cell lymphomas and myeloid leukemias in mice. In more recent studies CBL has been shown to be a negative regulator of tyrosine kinase signaling. The ubiquitin ligase activity of CBL leads to the degradation of tyrosine kinases, thus attenuating the signal of receptors. Targets of CBL include activated protein tyrosine kinases belonging to the Src and Syk/Zap-70 families. An additional mechanism to attenuate receptor signaling is thought to be achieved by CBL's interaction with downstream targets of tyrosine kinases, such as PI-3K and Vav.

Synonyms:

RING finger protein 55, CBL2, c-CBL

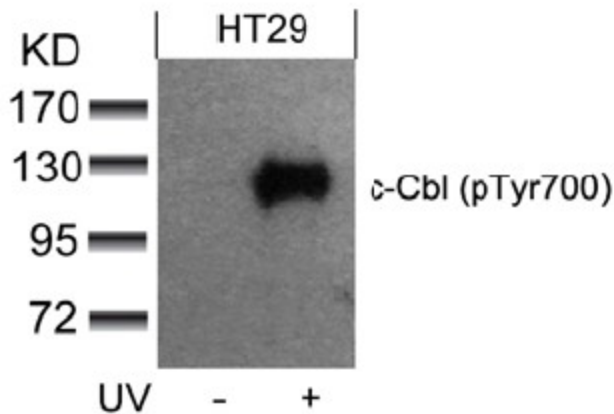
Product images:


Figure 3 Western blot analysis of extracts from HT29 cells untreated or treated with UV using c-Cbl (pTyr700) antibody

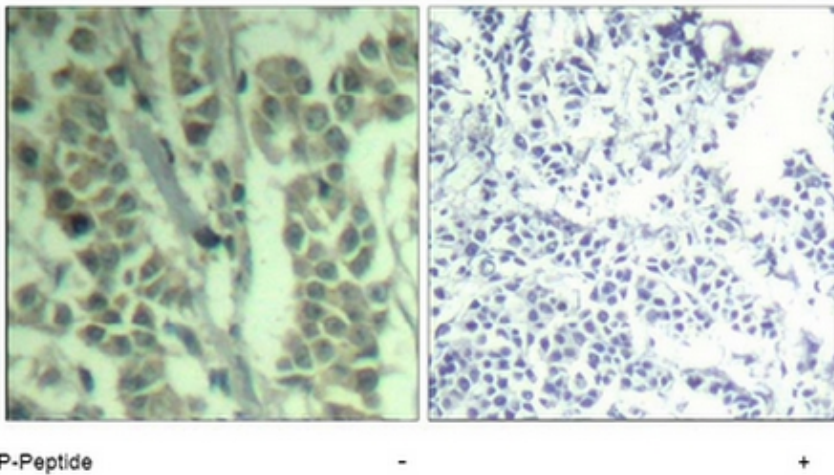


Figure 2. Immunohistochemical analysis of paraffin-embedded human breast carcinoma tissue using c-Cbl pTyr700 Antibody

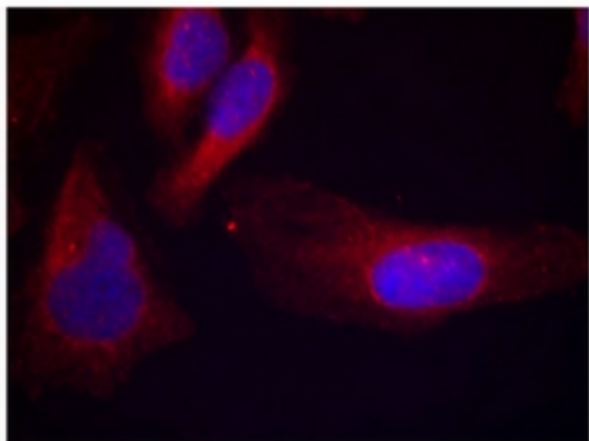


Figure 1. Immunofluorescence staining of methanol-fixed HeLa cells using c-Cbl pTyr700 antibody (Red).