

## Product datasheet for **AP08041PU-S**

### **SYK pTyr323 Rabbit Polyclonal Antibody**

#### **Product data:**

<b>Product Type:</b>	Primary Antibodies
<b>Applications:</b>	IF, IHC, WB
<b>Recommended Dilution:</b>	Western Blot: 1/500-1/1000. Immunofluorescence: 1/100-1/200. Immunohistochemistry on Paraffin-Embedded Sections: 1/50-1/100.
<b>Reactivity:</b>	Human
<b>Host:</b>	Rabbit
<b>Clonality:</b>	Polyclonal
<b>Immunogen:</b>	The antiserum was produced against synthesized phosphopeptide derived from human syk around the phosphorylation site of Tyrosine 323 (N-P-YP-E- P).
<b>Specificity:</b>	Antibody AP08041PU detects endogenous levels of Syk only when phosphorylated at Tyrosine 323.
<b>Formulation:</b>	PBS (without Mg <sup>2+</sup> and Ca <sup>2+</sup> ), pH 7.4, 150 mM NaCl, 0.02% Sodium Azide and 50% Glycerol. State: Aff - Purified State: Liquid purified Ig fraction.
<b>Concentration:</b>	lot specific
<b>Purification:</b>	Affinity Chromatography using epitope-specific phosphopeptide. The antibody against non-phosphopeptide was removed by chromatography using non-phosphopeptide corresponding to the phosphorylation site.
<b>Conjugation:</b>	Unconjugated
<b>Storage:</b>	Store the antibody (in aliquots) at -20°C. Avoid repeated freezing and thawing.
<b>Stability:</b>	Shelf life: One year from despatch.
<b>Gene Name:</b>	spleen tyrosine kinase
<b>Database Link:</b>	<a href="#">Entrez Gene 6850 Human P43405</a>



[View online »](#)

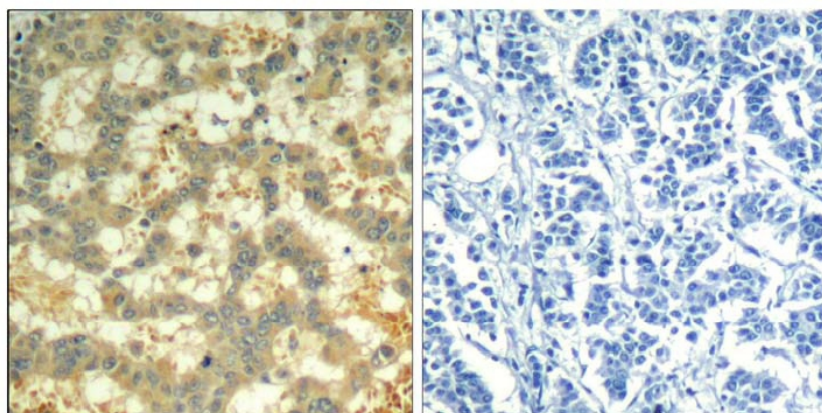
**Background:**

Syk (72 kDa) is a non receptor protein tyrosine kinase that plays an important role in immune receptor signal transduction and is implicated in endothelial cell functions, including cell growth and migration.

SYK is a positive effector of BCR stimulated responses. It couples the B cell antigen receptor (BCR) to the mobilization of calcium ions either through a phosphoinositide 3 kinase dependent pathway, when not phosphorylated on tyrosines of the linker region, or through a phospholipase C gamma dependent pathway, when phosphorylated on Tyr 342 and Tyr 346. Thus the differential phosphorylation of SYK can determine the pathway by which BCR is coupled to the regulation of intracellular calcium ions.

**Synonyms:**

Tyrosine-protein kinase SYK, Spleen tyrosine kinase

**Product images:**

P-Peptide

-

+

Figure 1. Immunohistochemical analysis of paraffin-embedded human breast carcinoma tissue using syk (phospho-Tyr323) Antibody.

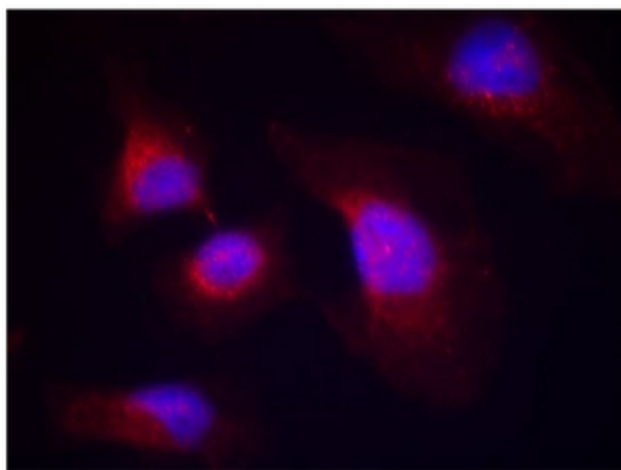


Figure 2. Immunofluorescence staining of methanol-fixed HeLa cells using SYK pTyr323 Antibody (Red).