

Product datasheet for **AP08040PU-N**

CDK6 pTyr24 Rabbit Polyclonal Antibody

Product data:

Product Type:	Primary Antibodies
Applications:	IF, IHC, WB
Recommended Dilution:	Immunofluorescence: 1/100 - 1/200. Immunohistochemistry on Paraffin-Embedded Sections: 1/50 - 1/100. Western Blot: 1/500 - 1/1000; Incubate membrane with diluted antibody in 5% nonfat milk, 1X TBS, 0,1% Tween-20 at 4°C with gentle shaking, overnight.
Reactivity:	Human, Mouse
Host:	Rabbit
Clonality:	Polyclonal
Immunogen:	Synthetic phosphopeptide derived from human CDK6 around the phosphorylation site of Tyrosine 24 (G-A-YP-G-K).
Specificity:	Antibody AP08040PU detects endogenous levels of CDK6 only when phosphorylated at Tyrosine 24.
Formulation:	PBS (without Mg ²⁺ and Ca ²⁺), pH 7.4, 150 mM NaCl, 0.02% Sodium Azide and 50% Glycerol. State: Aff - Purified State: Liquid purified Ig fraction
Concentration:	lot specific
Purification:	Affinity Chromatography
Conjugation:	Unconjugated
Storage:	Store the antibody (in aliquots) at -20°C. Avoid repeated freezing and thawing.
Stability:	Shelf life: One year from despatch.
Gene Name:	cyclin-dependent kinase 6
Database Link:	Entrez Gene 1021 Human Q00534



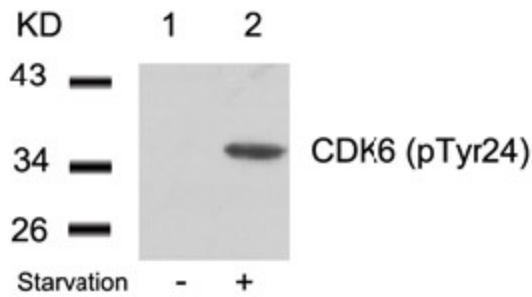
[View online »](#)

Background:

Cdk6 is a member of the cyclin-dependent protein kinase (CDK) family. CDK family members are highly similar to the gene products of *Saccharomyces cerevisiae* cdc28, and *Schizosaccharomyces pombe* cdc2, and are known to be important regulators of cell cycle progression. This kinase is a catalytic subunit of the protein kinase complex that is important for cell cycle G1 phase progression and G1/S transition. The activity of Cdk6 first appears in mid-G1 phase, and is controlled by regulatory subunits including D-type cyclins and members of INK4 family of CDK inhibitors. This kinase, as well as CDK4, has been shown to phosphorylate, and thus regulate the activity of, tumor suppressor protein Rb.

Synonyms:

PLSTIRE

Product images:


Western blot analysis of extracts from 293 cells untreated (Lane 1) or treated with starvation (Lane 2) using CDK6 (pTyr24) antibody

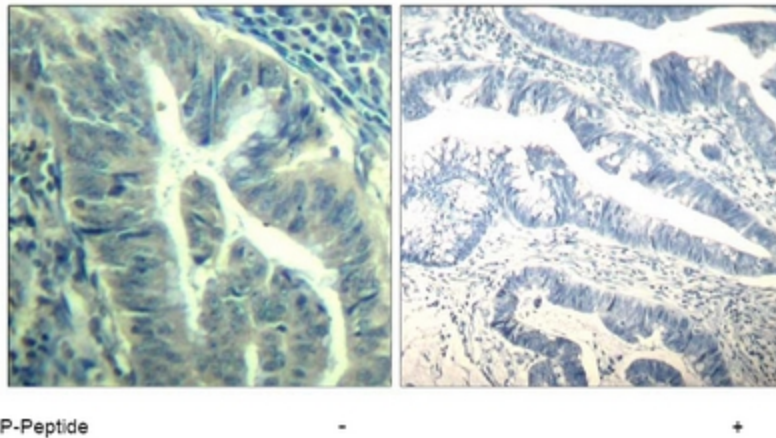


Figure 1. Immunohistochemical analysis of paraffin-embedded human colon carcinoma tissue using CDK6 (phospho-Tyr24) Antibody.

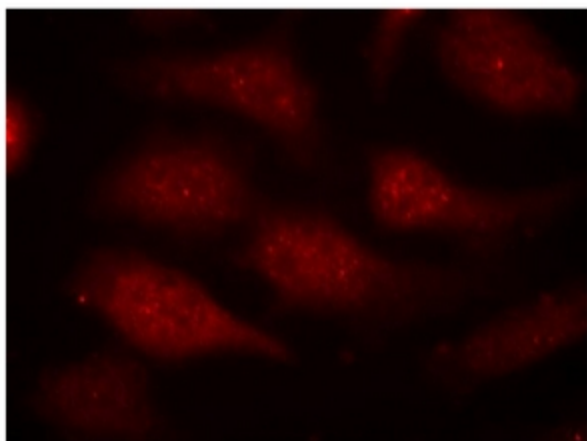


Figure 1. Immunofluorescence staining of methanol-fixed HeLa cells using CDK6 (phospho-Tyr24) Antibody (Red).