

Product datasheet for **AP08037PU-S**

PLCG 2 (PLCG2) pTyr1217 Rabbit Polyclonal Antibody

Product data:

Product Type:	Primary Antibodies
Applications:	IHC
Recommended Dilution:	Immunohistochemistry (1/50-1/100).
Reactivity:	Human, Mouse, Rat
Host:	Rabbit
Clonality:	Polyclonal
Immunogen:	The antiserum was produced against synthesized phosphopeptide derived from Human PLC-gamma 2 around the phosphorylation site of Tyrosine 1217 (F-L-Yp-D-T).
Specificity:	This antibody detects endogenous levels of PLC-gamma 2 only when phosphorylated at Tyrosine 1217.
Formulation:	PBS (without Mg ²⁺ and Ca ²⁺), pH 7.4, 150 mM NaCl, 0.02% Sodium Azide and 50% Glycerol. State: Aff - Purified State: Liquid purified Ig fraction.
Concentration:	lot specific
Purification:	Immunoaffinity Chromatography: The antibody was affinity-purified from rabbit antiserum by affinity-chromatography using epitope-specific phosphopeptide. The antibody against non-phosphopeptide was removed by chromatography using non-phosphopeptide corresponding to the phosphorylation site.
Conjugation:	Unconjugated
Storage:	Store the antibody (in aliquots) at -20°C. Avoid repeated freezing and thawing.
Stability:	Shelf life: One year from despatch.
Gene Name:	phospholipase C gamma 2
Database Link:	Entrez Gene 5336 Human P16885



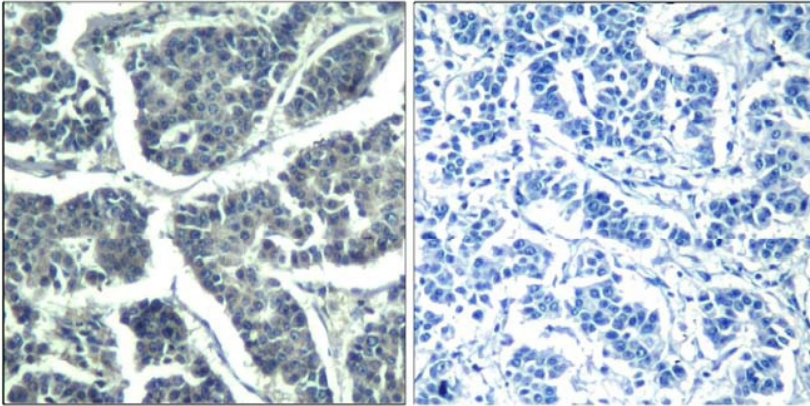
[View online »](#)

Background:

Enzymes of the phospholipase C family catalyze the hydrolysis of phospholipids to yield diacylglycerols and water soluble phosphorylated derivatives of the lipid head groups. A number of these enzymes have specificity for phosphoinositides. Of the phosphoinositide specific phospholipase C enzymes, C beta is regulated by heterotrimeric G protein coupled receptors, while the closely related C gamma 1 and C gamma 2 enzymes are controlled by receptor tyrosine kinases. The C gamma 1 and C gamma 2 enzymes are composed of phospholipase domains that flank regions of homology to noncatalytic domains of the SRC oncogene product, SH2 and SH3.

Synonyms:

Phospholipase C-gamma-2, PLC-gamma-2, Phospholipase C-IV, PLC-IV

Product images:

P-Peptide

-

+

Figure 1. Immunohistochemical analysis of paraffin-embedded human breast carcinoma tissue using PLC-gamma 2 (phospho-Tyr1217) Antibody.