

Product datasheet for **AP08036PU-S**

Aurora A (AURKA) pThr288 Rabbit Polyclonal Antibody

Product data:

Product Type:	Primary Antibodies
Applications:	IHC, WB
Recommended Dilution:	Western Blot. Immunohistochemistry (1/50-1/100).
Reactivity:	Human, Mouse
Host:	Rabbit
Clonality:	Polyclonal
Immunogen:	Peptide sequence around phosphorylation site of threonine 288 (R-T-T(p)-L-M) derived from Human Aurora A.
Specificity:	This antibody AP08036PU detects endogenous levels of Aurora A only when phosphorylated at Threonine 288.
Formulation:	PBS (without Mg ²⁺ and Ca ²⁺), pH 7.4, 150 mM NaCl, 0.02% Sodium Azide and 50% Glycerol. State: Aff - Purified State: Liquid purified Ig fraction.
Concentration:	lot specific
Purification:	Immunoaffinity Chromatography: The antibody was affinity-purified from rabbit antiserum by affinity-chromatography using epitope-specific phosphopeptide. The antibody against non-phosphopeptide was removed by chromatography using non-phosphopeptide corresponding to the phosphorylation site.
Conjugation:	Unconjugated
Storage:	Store undiluted at 2-8°C for one month or (in aliquots) at -20°C for longer. Avoid repeated freezing and thawing.
Stability:	Shelf life: one year from despatch.
Predicted Protein Size:	48 kDa
Gene Name:	aurora kinase A
Database Link:	Entrez Gene 6790 Human O14965



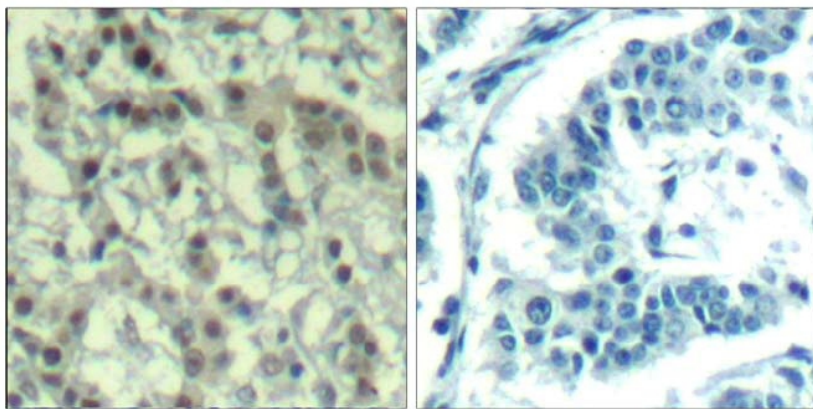
[View online »](#)

Background:

Aurora A plays a role in cell cycle regulation during anaphase and/or telophase, in relation to the function of the centrosome/spindle pole region during chromosome segregation. Aurora A plays a key role during tumor development and progression and is overexpressed in many human cancers including breast, ovarian and colorectal. Aurora A is viewed as a potential target for anticancer drug treatment.

Synonyms:

AURKA, AIK1, ARK1, AURA, BTAK, STK15, STK6, Aurora/IPL1-related kinase 1, AURORA2

Product images:

P-Peptide

-

+

Figure 1. Immunohistochemical analysis of paraffin-embedded human breast carcinoma tissue using Aurora A (phospho-Thr288) Antibody