

Product datasheet for **AP08033PU-N**

eIF2 alpha (EIF2S1) pSer49 Rabbit Polyclonal Antibody

Product data:

Product Type:	Primary Antibodies
Applications:	IF, IHC, WB
Recommended Dilution:	Immunofluorescence: 1/100-1/200. Immunohistochemistry on Paraffin-Embedded Sections: 1/50 - 1/100. Western Blot: 1/500 - 1/1000; Incubate membrane with diluted antibody in 5% nonfat milk, 1X TBS, 0,1% Tween-20 at 4°C with gentle shaking, overnight.
Reactivity:	Human, Mouse, Rat
Host:	Rabbit
Clonality:	Polyclonal
Immunogen:	Synthetic phosphopeptide derived from human eIF2a around the phosphorylation site of Serine 49 (L-L-SP-E-L).
Specificity:	Antibody detects endogenous levels of eIF2a only when phosphorylated at Serine 49.
Formulation:	PBS (without Mg ²⁺ and Ca ²⁺), pH 7.4, 150 mM NaCl, 0.02% Sodium Azide and 50% Glycerol. State: Aff - Purified State: Liquid purified Ig fraction
Concentration:	lot specific
Purification:	Affinity Chromatography
Conjugation:	Unconjugated
Storage:	Store the antibody (in aliquots) at -20°C. Avoid repeated freezing and thawing.
Stability:	Shelf life: One year from despatch.
Gene Name:	eukaryotic translation initiation factor 2 subunit alpha
Database Link:	Entrez Gene 1965 Human P05198



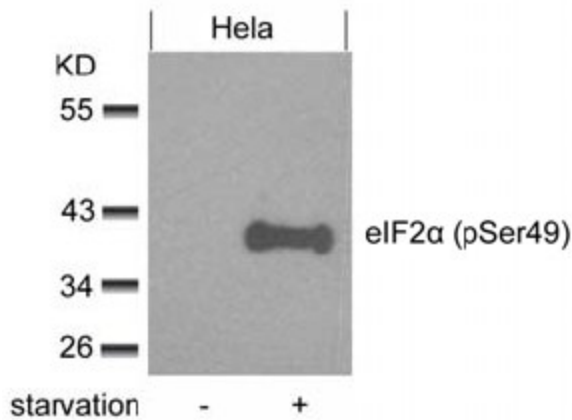
[View online »](#)

Background:

The translation initiation factor eIF2 catalyzes the first regulated step of protein synthesis initiation, promoting the binding of the initiator tRNA to 40S ribosomal subunits. Binding occurs as a ternary complex of methionyl-tRNA, eIF2, and GTP. eIF2 is composed of 3 nonidentical subunits, alpha (36 kD), beta (38 kD), and gamma (52 kD). The rate of formation of the ternary complex is modulated by the phosphorylation state of eIF2-alpha.

Synonyms:

EIF2-A, eIF-2A, eIF-2-alpha, eIF-2alpha, eIF2 alpha

Product images:


Western Blot analysis of extracts from HeLa cells untreated or treated with starvation using eIF2alpha (pSer49) antibody

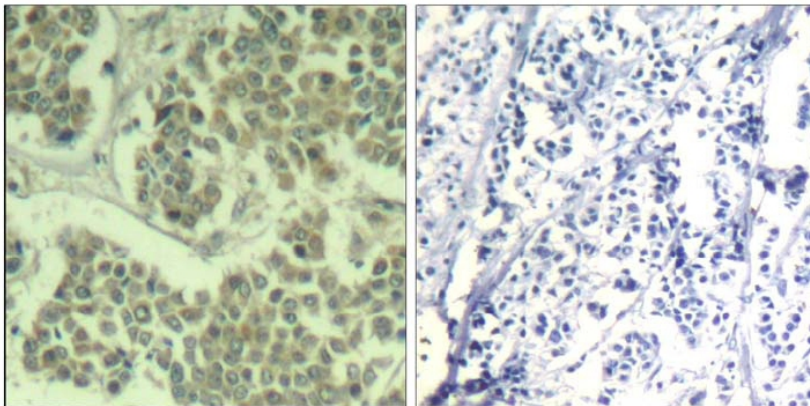


Figure 1. Immunohistochemical analysis of paraffin-embedded human breast carcinoma tissue using eIF2α pSer49) Antibody.

P-Peptide - +

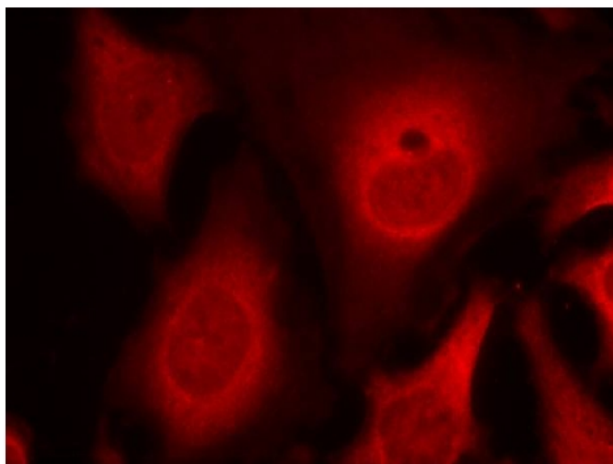


Figure 2. Immunofluorescence staining of methanol-fixed HeLa cells using eIF2-alpha (phospho-Ser49) Antibody (Red).