

Product datasheet for **AP08031PU-N**

AKT1 pThr450 Rabbit Polyclonal Antibody

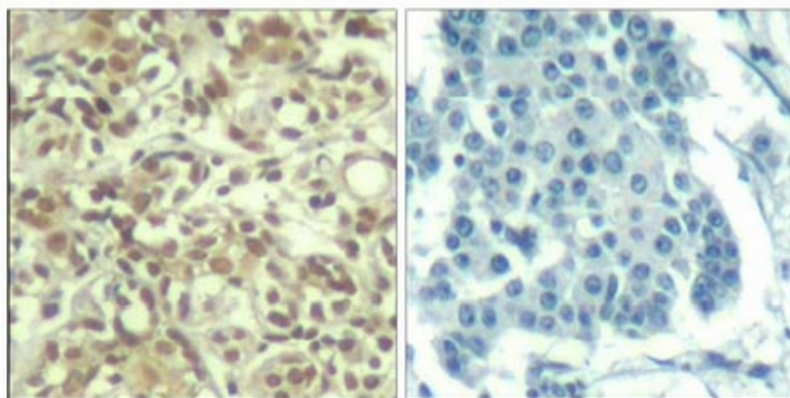
Product data:

Product Type:	Primary Antibodies
Applications:	IF, IHC
Recommended Dilution:	Immunohistochemistry (1/50-1/100). Immunofluorescence (1/100-1/200).
Reactivity:	Human, Mouse, Rat
Host:	Rabbit
Clonality:	Polyclonal
Immunogen:	The antiserum was produced against synthesized phosphopeptide derived from human AKT1 around the phosphorylation site of threonine 450 (T-I-TP-P-P).
Specificity:	AKT1 (phospho-Thr450) Antibody AP08031PU detects endogenous levels of AKT1 only when phosphorylated at Threonine 450.
Formulation:	PBS (without Mg ²⁺ and Ca ²⁺), pH 7.4, 150 mM NaCl, 0.02% Sodium Azide and 50% Glycerol. State: Aff - Purified State: Liquid purified Ig fraction.
Concentration:	lot specific
Purification:	Immunoaffinity Chromatography: The antibody was affinity-purified from rabbit antiserum by affinity-chromatography using epitope-specific phosphopeptide. The antibody against non-phosphopeptide was removed by chromatography using non-phosphopeptide corresponding to the phosphorylation site.
Conjugation:	Unconjugated
Storage:	Store the antibody (in aliquots) at -20°C. Avoid repeated freezing and thawing.
Stability:	Shelf life: One year from despatch.
Gene Name:	AKT serine/threonine kinase 1
Database Link:	Entrez Gene 207 Human P31749
Synonyms:	Akt-1, RAC-PK-alpha, Protein kinase B, C-AKT



[View online »](#)

Product images:



P-Peptide

-

+

Figure 1. Immunohistochemical analysis of paraffin-embedded human breast carcinoma tissue using AKT1 (phospho-Thr450) Antibody AP08031PU.

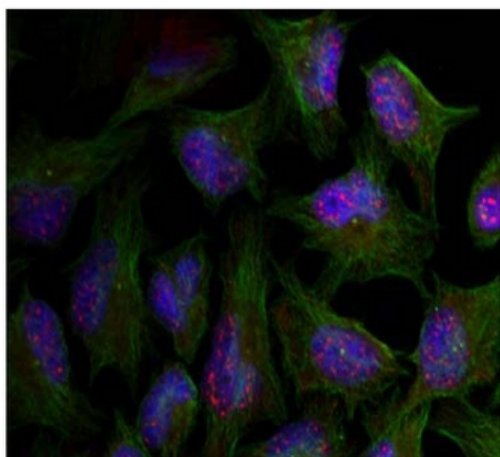


Figure 2. Immunofluorescence staining of methanol-fixed HeLa cells using AKT1 (phospho-Thr450) Antibody (AP08031PU, red).