

## Product datasheet for **AP08030PU-S**

### **AKT1 pTyr315/316/312 Rabbit Polyclonal Antibody**

#### **Product data:**

<b>Product Type:</b>	Primary Antibodies
<b>Applications:</b>	IF, IHC
<b>Recommended Dilution:</b>	Immunofluorescence: 1/100-1/200. Immunohistochemistry on Paraffin-Embedded Sections: 1/50-1/100.
<b>Reactivity:</b>	Human, Mouse, Rat
<b>Host:</b>	Rabbit
<b>Clonality:</b>	Polyclonal
<b>Immunogen:</b>	The antiserum was produced against synthesized phosphopeptide derived from human AKT1/AKT2/AKT3 around the phosphorylation site of Tyrosine 315/316/312 (P-E-YP-L-A).
<b>Specificity:</b>	This Antibody AP08030PU detects endogenous levels of AKT1/AKT2/AKT3 only when phosphorylated at Tyrosine 315/316/312.
<b>Formulation:</b>	PBS (without Mg <sup>2+</sup> and Ca <sup>2+</sup> ), pH 7.4, 150 mM NaCl, 0.02% Sodium Azide and 50% Glycerol. State: Aff - Purified State: Liquid purified Ig fraction.
<b>Concentration:</b>	lot specific
<b>Purification:</b>	Affinity Chromatography using epitope-specific phosphopeptide. The antibody against non-phosphopeptide was removed by chromatography using non-phosphopeptide corresponding to the phosphorylation site.
<b>Conjugation:</b>	Unconjugated
<b>Storage:</b>	Store the antibody (in aliquots) at -20°C. Avoid repeated freezing and thawing.
<b>Stability:</b>	Shelf life: One year from despatch.
<b>Gene Name:</b>	AKT serine/threonine kinase 1
<b>Database Link:</b>	<a href="#">Entrez Gene 207 Human P31749</a>

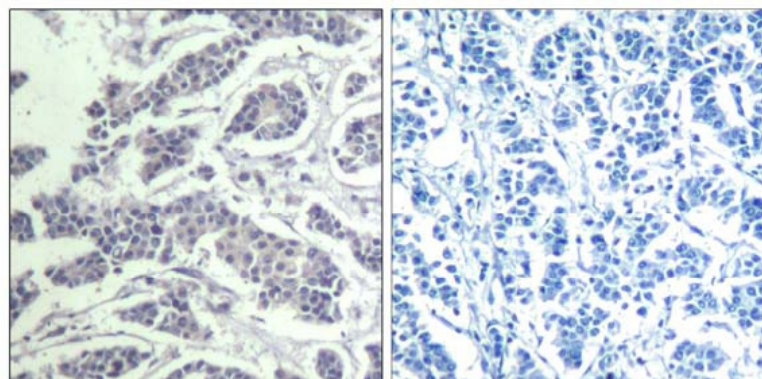


[View online »](#)

**Background:** AKT1/2/3 are members of the AKT, also called PKB, serine/threonine protein kinase family. AKT kinases are known to be regulators of cell signaling in response to insulin and growth factors. They are involved in a wide variety of biological processes including cell proliferation, differentiation, apoptosis, tumorigenesis, as well as glycogen synthesis and glucose uptake.

**Synonyms:** Akt-1, RAC-PK-alpha, RAC-PK-beta, RAC-PK-gamma, PKB gamma, Protein kinase B, C-AKT, PKBG, AKT-2, AKT-3 Review 010

**Product images:**



P-Peptide                      -                      +

Figure 1. Immunohistochemical analysis of paraffin-embedded human breast carcinoma tissue using AKT1/AKT2/AKT3 (Phospho-Tyr315/316/312) Antibody.

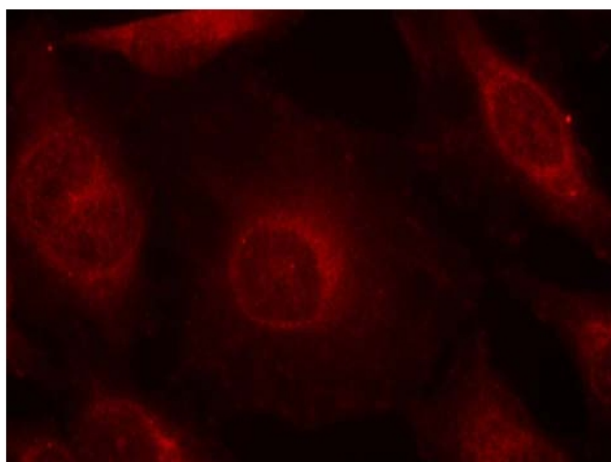


Figure 2. Immunofluorescence staining of methanol-fixed HeLa cells using AKT1/AKT2/AKT3 (Phospho-Tyr315/316/312) Antibody (Red).