

Product datasheet for **AP08030PU-N**

AKT1 pTyr315/316/312 Rabbit Polyclonal Antibody

Product data:

Product Type:	Primary Antibodies
Applications:	IF, IHC
Recommended Dilution:	Immunofluorescence: 1/100-1/200. Immunohistochemistry on Paraffin-Embedded Sections: 1/50-1/100.
Reactivity:	Human, Mouse, Rat
Host:	Rabbit
Clonality:	Polyclonal
Immunogen:	The antiserum was produced against synthesized phosphopeptide derived from human AKT1/AKT2/AKT3 around the phosphorylation site of Tyrosine 315/316/312 (P-E-YP-L-A).
Specificity:	This Antibody AP08030PU detects endogenous levels of AKT1/AKT2/AKT3 only when phosphorylated at Tyrosine 315/316/312.
Formulation:	PBS (without Mg ²⁺ and Ca ²⁺), pH 7.4, 150 mM NaCl, 0.02% Sodium Azide and 50% Glycerol. State: Aff - Purified State: Liquid purified Ig fraction.
Concentration:	lot specific
Purification:	Affinity Chromatography using epitope-specific phosphopeptide. The antibody against non-phosphopeptide was removed by chromatography using non-phosphopeptide corresponding to the phosphorylation site.
Conjugation:	Unconjugated
Storage:	Store the antibody (in aliquots) at -20°C. Avoid repeated freezing and thawing.
Stability:	Shelf life: One year from despatch.
Gene Name:	AKT serine/threonine kinase 1
Database Link:	Entrez Gene 207 Human P31749

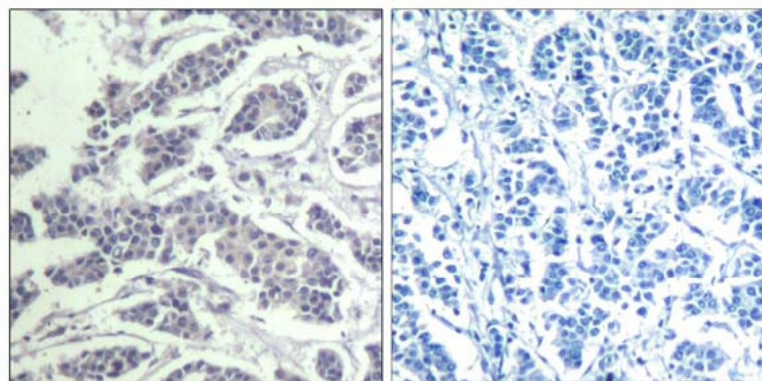


[View online »](#)

Background: AKT1/2/3 are members of the AKT, also called PKB, serine/threonine protein kinase family. AKT kinases are known to be regulators of cell signaling in response to insulin and growth factors. They are involved in a wide variety of biological processes including cell proliferation, differentiation, apoptosis, tumorigenesis, as well as glycogen synthesis and glucose uptake.

Synonyms: Akt-1, RAC-PK-alpha, RAC-PK-beta, RAC-PK-gamma, PKB gamma, Protein kinase B, C-AKT, PKBG, AKT-2, AKT-3 Review 010

Product images:



P-Peptide - +

Figure 1. Immunohistochemical analysis of paraffin-embedded human breast carcinoma tissue using AKT1/AKT2/AKT3 (Phospho-Tyr315/316/312) Antibody.

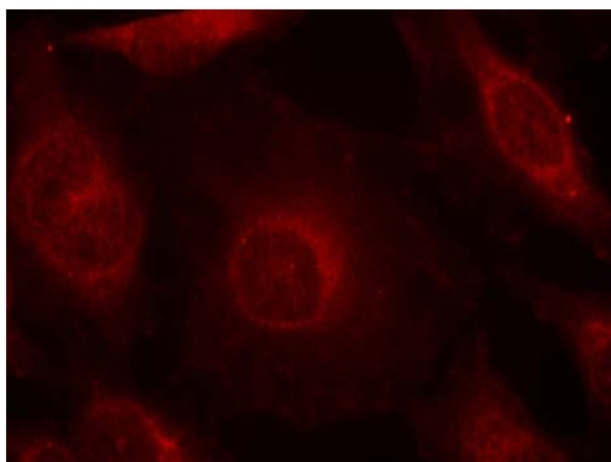


Figure 2. Immunofluorescence staining of methanol-fixed HeLa cells using AKT1/AKT2/AKT3 (Phospho-Tyr315/316/312) Antibody (Red).