

## Product datasheet for **AP08025PU-N**

### SMAD2 pSer467 Rabbit Polyclonal Antibody

#### Product data:

Product Type:	Primary Antibodies
Applications:	WB
Recommended Dilution:	Western Blot (1/500-1/1000).
Reactivity:	Human, Mouse, Rat
Host:	Rabbit
Clonality:	Polyclonal
Immunogen:	The antiserum was produced against synthesized phosphopeptide derived from human Smad2 around the phosphorylation site of Serine 467 (C-S-S-M-SP).
Specificity:	SMAD2 (Phospho-Ser467) Antibody AP08025PU detects endogenous levels of Smad2 only when phosphorylated at Serine 467.
Formulation:	PBS (without Mg <sup>2+</sup> and Ca <sup>2+</sup> ), pH 7.4, 150 mM NaCl, 0.02% Sodium Azide and 50% Glycerol. State: Aff - Purified State: Liquid purified Ig fraction.
Concentration:	lot specific
Purification:	Immunoaffinity Chromatography: The antibody was affinity-purified from rabbit antiserum by affinity-chromatography using epitope-specific phosphopeptide. The antibody against non-phosphopeptide was removed by chromatography using non-phosphopeptide corresponding to the phosphorylation site.
Conjugation:	Unconjugated
Storage:	Store the antibody (in aliquots) at -20°C. Avoid repeated freezing and thawing.
Stability:	Shelf life: One year from despatch.
Gene Name:	SMAD family member 2
Database Link:	<a href="#">Entrez Gene 4087 Human Q15796</a>
Synonyms:	SMAD family member 2, SMAD-2, SMAD 2, MADH2, MAD homolog 2, MADR2, Mad-related protein 2, JV18-1



[View online »](#)

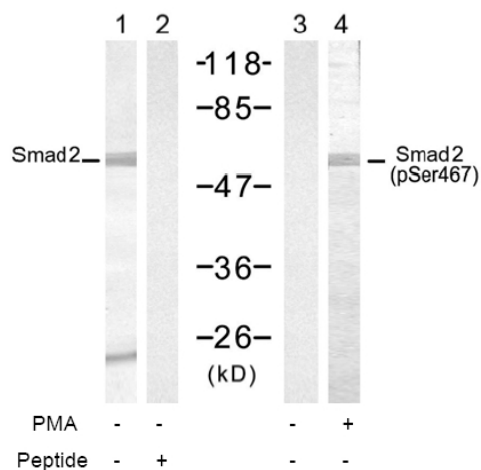
**Product images:**


Figure 1. Western blot analysis of extract from 293 cells, untreated or treated with PMA (200nM, 30min), using SMAD2 Antibody AP08072PU (Lane 1 and 2) and SMAD2 (Phospho-Ser467) Antibody AP08025PU (Lane 3 and 4).