

Product datasheet for **AP08023PU-S**

SHP1 (PTPN6) pTyr536 Rabbit Polyclonal Antibody

Product data:

Product Type:	Primary Antibodies
Applications:	IF, IHC
Recommended Dilution:	Immunofluorescence: 1/100-1/200. Immunohistochemistry on Paraffin-Embedded Sections: 1/50-1/100.
Reactivity:	Human, Mouse, Rat
Host:	Rabbit
Clonality:	Polyclonal
Immunogen:	The antiserum was produced against synthesized phosphopeptide derived from human SHP-1 around the phosphorylation site of Tyrosine 536 (S-E-YP-G-N).
Specificity:	This Antibody AP08023PU detects endogenous levels of PTPN6/SHP-1 only when phosphorylated at Tyrosine 536.
Formulation:	PBS (without Mg ²⁺ and Ca ²⁺), pH 7.4, 150 mM NaCl, 0.02% Sodium Azide and 50% Glycerol. State: Aff - Purified State: Liquid purified Ig fraction.
Concentration:	lot specific
Purification:	Affinity Chromatography using epitope-specific phosphopeptide. The antibody against non-phosphopeptide was removed by chromatography using non-phosphopeptide corresponding to the phosphorylation site.
Conjugation:	Unconjugated
Storage:	Upon receipt, store undiluted (in aliquots) at -20°C. Avoid repeated freezing and thawing.
Stability:	Shelf life: one year from despatch.
Gene Name:	protein tyrosine phosphatase, non-receptor type 6
Database Link:	Entrez Gene 5777 Human P29350



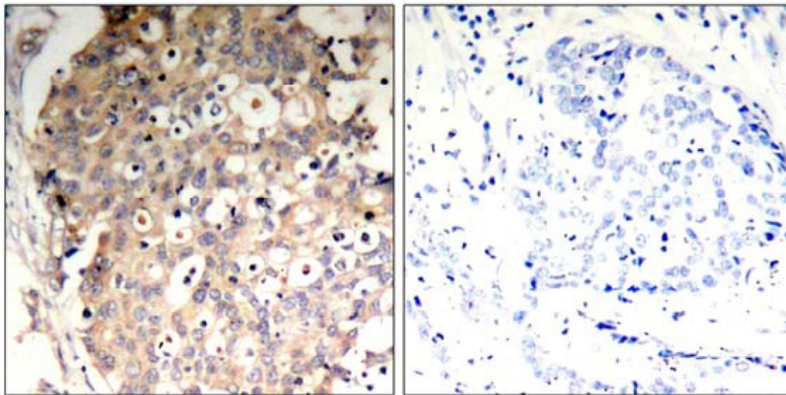
[View online »](#)

Background:

SHP1 is a member of the non receptor protein tyrosine phosphatase subfamily. The PTP family comprises of at least 37 proteins, characterized by a catalytic phosphatase domain of approximately 240 amino acids, and includes both transmembrane and cytosolic enzymes. PTP1B is cytosolic. The PTPs have high substrate specificity for phosphotyrosyl proteins, at the primary sequence level sharing little similarity with the protein serine phosphatases, protein threonine phosphatases, or the acid and alkaline phosphatases. SHP1 is implicated in the control of tyrosine kinase signalling pathways in cellular proliferation, with a potential role in cancer.

Synonyms:

PTPN-6, HCP, PTP1C, Protein-tyrosine phosphatase 1C, PTP-1C, SH-PTP1, Protein-tyrosine phosphatase SHP-1

Product images:

P-Peptide

-

+

Figure 1. Immunohistochemical analysis of paraffin-embedded human breast carcinoma tissue, using SHP-1 pTyr536 Antibody.

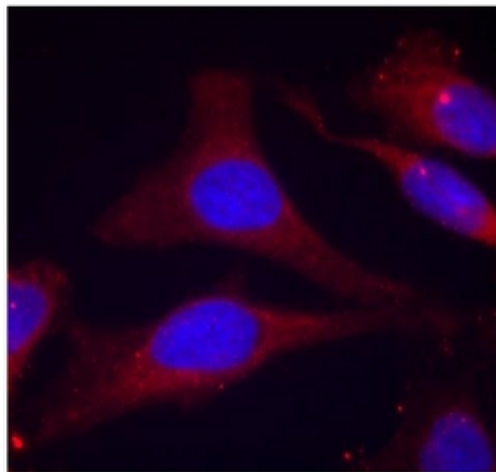


Figure 2. Immunofluorescence staining of methanol-fixed HeLa cells using SHP-1 pTyr536 antibody (Red).