

Product datasheet for **AP08017PU-N**

p21 (CDKN1A) pThr145 Rabbit Polyclonal Antibody

Product data:

Product Type:	Primary Antibodies
Applications:	IHC
Recommended Dilution:	Immunohistochemistry (1/50-1/100).
Reactivity:	Human
Host:	Rabbit
Clonality:	Polyclonal
Immunogen:	The antiserum was produced against synthesized phosphopeptide derived from human p21Cip1 around the phosphorylation site of threonine 145 (R-Q-TP-S-M).
Specificity:	This antibody p21Cip1 (pThr145) detects endogenous levels of p21Cip1 only when phosphorylated at Threonine 145.
Formulation:	PBS (without Mg ²⁺ and Ca ²⁺), pH 7.4, 150 mM NaCl, 0.02% Sodium Azide and 50% Glycerol. State: Aff - Purified State: Liquid purified Ig fraction.
Concentration:	lot specific
Purification:	Immunoaffinity Chromatography: The antibody was affinity-purified from rabbit antiserum by affinity-chromatography using epitope-specific phosphopeptide. The antibody against non-phosphopeptide was removed by chromatography using non-phosphopeptide corresponding to the phosphorylation site.
Conjugation:	Unconjugated
Storage:	Store the antibody (in aliquots) at -20°C. Avoid repeated freezing and thawing.
Stability:	Shelf life: One year from despatch.
Gene Name:	cyclin-dependent kinase inhibitor 1A
Database Link:	Entrez Gene 1026 Human P38936



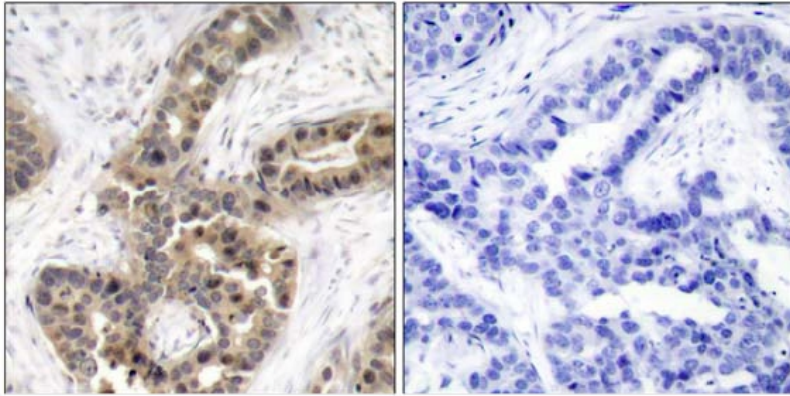
[View online »](#)

Background:

Cell cycle progression is regulated by cyclins and their cognate Cdks. p21 (WAF1/CIP1) inhibits the activity of each member of the cyclin/Cdk family, and overexpression of this protein inhibits the proliferation of mammalian cells. The expression of p21 is inducible by a wide range of stress stimuli. p21 is tightly regulated at the transcriptional level by p53, and probably serves as the effector of p53 cell cycle control.

Synonyms:

CAP20, CDKN1, CIP1, MDA6, MDA-6, PIC1, SDI1, WAF1

Product images:

P-Peptide

-

+

Figure 1. Immunohistochemical analysis of paraffin- embedded human breast carcinoma tissue using p21Cip1 (pThr145) antibody AP08017PU.