

Product datasheet for **AP08013PU-N**

alpha Synuclein (SNCA) pSer129 Rabbit Polyclonal Antibody

Product data:

| | |
|-----------------------|---|
| Product Type: | Primary Antibodies |
| Applications: | IF, IHC, WB |
| Recommended Dilution: | Western blot: 1/500-1/1000. |
| Reactivity: | Human, Mouse, Rat |
| Host: | Rabbit |
| Clonality: | Polyclonal |
| Immunogen: | Synthetic phosphopeptide derived from Human alpha-Synuclein around the phosphorylation site of Serine 129 (M-P-SP-E-E). |
| Specificity: | This antibody AP08013PU detects endogenous levels of alpha-Synuclein only when phosphorylated at Serine 129. |
| Formulation: | PBS (without Mg ²⁺ and Ca ²⁺), pH 7.4, 150 mM NaCl containing 0.02% Sodium Azide as preservative and 50% Glycerol as stabilizer. State: Aff - Purified State: Liquid purified Ig fraction. |
| Concentration: | lot specific |
| Purification: | Immunoaffinity Chromatography: The antibody was affinity-purified from rabbit antiserum by affinity-chromatography using epitope-specific phosphopeptide. The antibody against non-phosphopeptide was removed by chromatography using non-phosphopeptide corresponding to the phosphorylation site. |
| Conjugation: | Unconjugated |
| Storage: | Store the antibody (in aliquots) at -20°C. Avoid repeated freezing and thawing. |
| Stability: | Shelf life: One year from despatch. |
| Gene Name: | synuclein alpha |
| Database Link: | Entrez Gene 6622 Human P37840 |



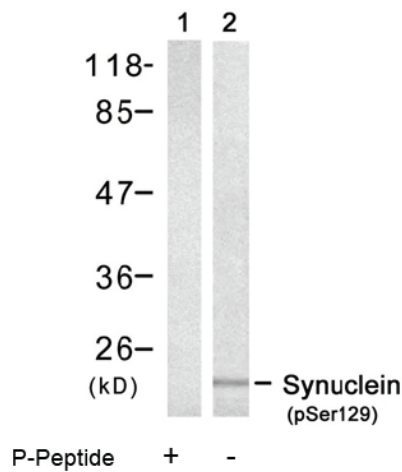
[View online »](#)

Background:

Alpha Synuclein is implicated in the regulation of dopamine release and transport. It is a soluble protein, expressed principally in the brain but also expressed in low concentrations in all tissues examined (except liver). In the nervous system, alpha Synuclein is primarily located at presynaptic terminals and is found membrane bound in dopaminergic neurons. It can form filamentous aggregates that are the major non amyloid component of intracellular inclusions in several neurodegenerative diseases (synucleinopathies), including Parkinson's Disease. Alpha Synuclein induces fibrillization of microtubule associated protein tau and reduces neuronal responsiveness to various apoptotic stimuli, leading to a decreased caspase 3 activation. Alpha synuclein is a protein phosphorylated predominantly on serine residues.

Synonyms:

NACP, PARK1

Product images:


Lane 2: Western blot analysis of extracts from Mouse brain tissue, using alpha-Synuclein (pSer129) antibody. Lane 1: Same antibody preincubated with blocking peptide