

Product datasheet for **AP08011PU-S**

eNOS (NOS3) pSer1177 Rabbit Polyclonal Antibody

Product data:

Product Type:	Primary Antibodies
Applications:	IF, IHC
Recommended Dilution:	Immunofluorescence: 1/100-1/200. Immunohistochemistry on Paraffin Embedded Sections: 1/50-1/100.
Reactivity:	Human, Mouse, Rat
Host:	Rabbit
Clonality:	Polyclonal
Immunogen:	The antiserum was produced against synthesized phosphopeptide derived from human eNOS around the phosphorylation site of Serine 1177 (T-Q-Sp-F-S).
Specificity:	Phospho-eNOS antibody (AP08011PU) detects endogenous levels of eNOS only when phosphorylated at serine 1177.
Formulation:	PBS (without Mg ²⁺ and Ca ²⁺), pH 7.4, 150 mM NaCl, 0.02% Sodium Azide as preservative and 50% Glycerol as stabilizer. State: Aff - Purified State: Liquid purified Ig fraction.
Concentration:	lot specific
Purification:	Immunoaffinity Chromatography using epitope-specific phosphopeptide. The antibody against non-phosphopeptide was removed by chromatography using non-phosphopeptide corresponding to the phosphorylation site.
Conjugation:	Unconjugated
Storage:	Store the antibody (in aliquots) at -20°C. Avoid repeated freezing and thawing.
Stability:	Shelf life: One year from despatch.
Gene Name:	nitric oxide synthase 3
Database Link:	Entrez Gene 4846 Human P29474



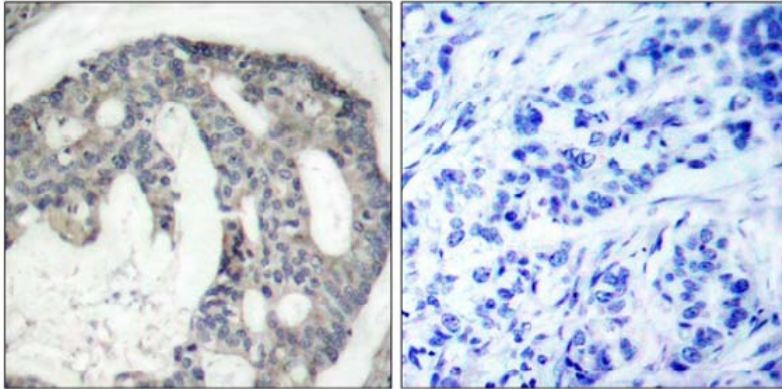
[View online »](#)

Background:

eNOS is a calcium/calmodulin dependent enzyme which undergoes several post translational modifications, including acylation with myristate and palmitate, and phosphorylation on numerous residues. As with the other members of the NOS family, eNOS derives the diffusible multifunctional second messenger NO from L arginine through a series of reactions in which L citrulline is an intermediate. eNOS plays an important role in controlling vascular tone, platelet aggregation, and cardiac myocyte function.

Synonyms:

Endothelial NOS, EC-NOS, NOS type III, Constitutive NOS, eNOS

Product images:

P-Peptide

-

+

Figure 1. Immunohistochemical analysis of paraffin-embedded human breast carcinoma tissue using Phospho-Ser1177 eNOS antibody

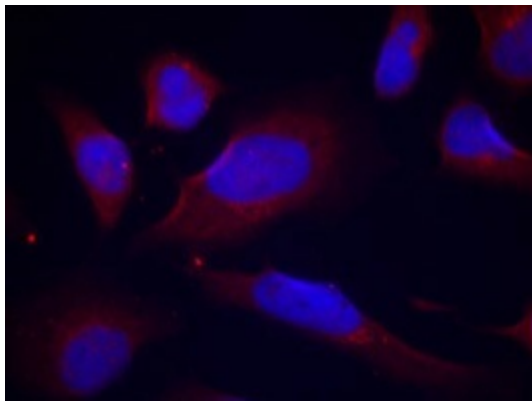


Figure 2. Immunofluorescence staining of methanol-fixed HeLa cells using phospho-Ser1177 eNOS antibody (Red).