

## Product datasheet for **AP08007PU-N**

### Myosin Light Chain 2 (MYL2) (pSer19) Rabbit Polyclonal Antibody

#### Product data:

Product Type:	Primary Antibodies
Applications:	IHC, WB
Recommended Dilution:	<b>Western Blot:</b> 1/500-1/1000. <b>Immunohistochemistry on Paraffin Sections:</b> 1/50-1/100.
Reactivity:	Human, Mouse, Rat
Host:	Rabbit
Clonality:	Polyclonal
Immunogen:	Peptide sequence around phosphorylation site of serine 19 (A-T- <del>p</del> -N-V) derived from Human Myosin Light Chain 2.
Specificity:	This antibody detects endogenous levels of Myosin Light Chain 2 only when phosphorylated at Serine 19.
Formulation:	PBS (without Mg <sup>2+</sup> and Ca <sup>2+</sup> ), pH 7.4, 150 mM NaCl State: Aff - Purified State: Liquid purified Ig fraction Stabilizer: 50% Glycerol Preservative: 0.02% Sodium Azide
Concentration:	lot specific
Purification:	Immunoaffinity Chromatography using epitope-specific phosphopeptide. The antibody against non-phosphopeptide was removed by chromatography using non-phosphopeptide corresponding to the phosphorylation site
Conjugation:	Unconjugated
Storage:	Upon receipt, store undiluted (in aliquots) at -20°C. Avoid repeated freezing and thawing.
Stability:	Shelf life: one year from despatch.
Predicted Protein Size:	18 kDa
Gene Name:	myosin light chain 2
Database Link:	<a href="#">Entrez Gene 4633 Human P10916</a>



[View online »](#)

**Background:**

Myosin light chain 2 (MYL2) encodes the regulatory light chain associated with cardiac myosin beta heavy chain. It is an important protein involved in the regulation of myosin ATPase activity in smooth muscle and Ca<sup>+</sup> triggers the phosphorylation of regulatory light chain that in turn triggers contraction. Mutations in MYL2 are associated with mid-left ventricular chamber type hypertrophic cardiomyopathy.

**Synonyms:**

MLC-2v, MLC-2

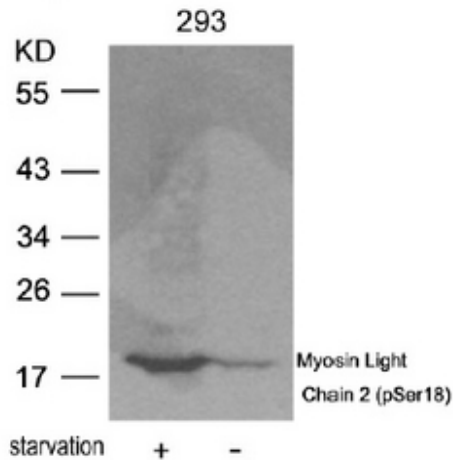
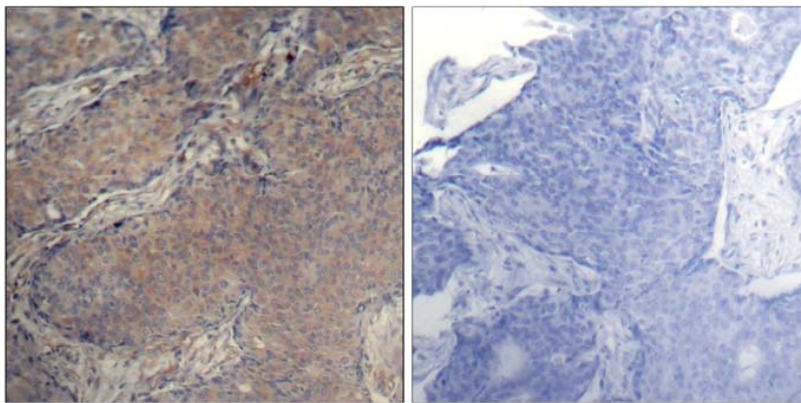
**Product images:**


Figure 2. Western blot analysis of extracts from 293 cells untreated or treated with starvation using Myosin Light Chain 2 pSer18 Antibody.



P-Peptide

-

+

Figure 1. Immunohistochemical analysis of paraffin-embedded human breast carcinoma tissue using Myosin Light Chain 2 (pSer18) Antibody.