

Product datasheet for **AP08006PU-N**

RSK1 p90 (RPS6KA1) pSer352 Rabbit Polyclonal Antibody

Product data:

Product Type:	Primary Antibodies
Applications:	WB
Recommended Dilution:	Western blot (1/500-1/1000).
Reactivity:	Human, Mouse, Rat
Host:	Rabbit
Clonality:	Polyclonal
Immunogen:	The antiserum was produced against synthesized phosphopeptide derived from mouse p90RSK around the phosphorylation site of serine 352 (R-D-SP-P-G).
Specificity:	This antibody p90RSK (Phospho-Ser352) detects endogenous levels of p90RSK only when phosphorylated at serine 352.
Formulation:	PBS (without Mg ²⁺ and Ca ²⁺), pH 7.4, 150 mM NaCl, 0.02% Sodium Azide and 50% Glycerol. State: Aff - Purified State: Liquid purified Ig fraction.
Concentration:	lot specific
Purification:	Immunoaffinity Chromatography: The antibody was affinity-purified from rabbit antiserum by affinity-chromatography using epitope-specific phosphopeptide. The antibody against non-phosphopeptide was removed by chromatography using non-phosphopeptide corresponding to the phosphorylation site.
Conjugation:	Unconjugated
Storage:	Store the antibody (in aliquots) at -20°C. Avoid repeated freezing and thawing.
Stability:	Shelf life: One year from despatch.
Gene Name:	ribosomal protein S6 kinase A1
Database Link:	Entrez Gene 6195 Human Q15418
Synonyms:	Ribosomal S6 kinase 1, 90 kDa ribosomal protein S6 kinase 1, MAPKAPK1A, RSK1, RSK-1, p90RSK1



[View online »](#)

Product images:

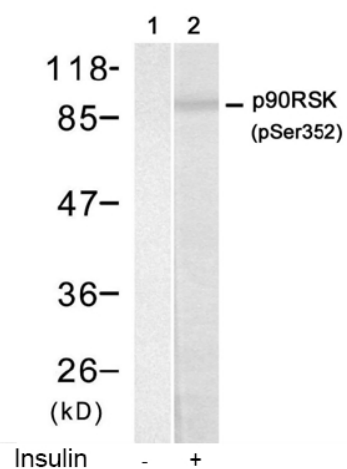


Figure 1. Western blot analysis of extract from HUVEC cells using p90RSK pSer352 antibody AP08006PU.